

**2003**

Off Track Gallery

9th Annual Southern California Art Show

“Small Image at the Off Track Gallery”  
Encinitas, CA

June 27 – July 25, 2003

Juried by Robert J. Sanchez, an internation-  
ally exhibited

and collected artist and arts educator.



# The Paint Rag

Off Track Gallery, 510 N. Coast Hwy 101, Encinitas, CA 92024 760-942-3636 Hrs: 9 a.m. to 6 p.m. Daily

## Mark Your Calendar

\* Friday, December 27th  
Monthly Show Take-In  
9:30 a.m. to 2:00 p.m.  
First come, first serve  
(Please bring large paintings by 10:30)

\* Thursday, January 2nd  
Board Meeting 9:30 a.m.  
Larabee House, Quail Gardens

\* Thursday, January 2nd  
General Meeting  
1:30 pm.  
Ecke Hall, Quail Gardens

\* Monday, January 6<sup>th</sup>, 2003  
Renter's Quarterly Rotation  
9:00am-1:00pm

## Environmental Painters

The Environmental Painters will meet Jan. 7 and 14 at Torrey Pines State Reserve. They have a beautiful show at La Vida Del Mar for the month of December. There will be no scheduled meetings in December.

## January 2003

### January Judge / Demonstrator

### Member Panel

Isabella Breasted will demonstrate framing, Kim Treffinger will demonstrate glass mosaics, and Karen Anderson will demo on Photography.

**ATTENTION:** All changes of address, phone, or email information should be made only to the membership chairperson. Either send them to: Jeff Brosbe, 2615 33rd Street, San Diego, CA 92104-5113 or [brosbe@cox.net](mailto:brosbe@cox.net), please.

## Artist of the Month

### Loretta Phoenix

"Love of color, texture, design and a touch of mystic ... make up my earliest feelings of enchantment. After years of teaching others in the business and cosmetic world, I opted for a more permanent color structure, making my art #1. After many college art courses, workshops, seminars; Plein-air paintings of which include oils, watercolor and mixed media; subject matter ranges from seascapes, landscapes, flower fields; sizes range from large to mini"

Loretta has been a SDAG member for over 25 years

**Reception:** Sunday January 19<sup>th</sup>  
from 1 - 4 PM

Everyone welcome

## "Calendar Sign Up Date"

Due to complaints that Lysinka and Dot were signing up some sitters before others, we have decided to make it equal for all. It will be noted in Paint Rag when the new calendars are placed in gallery for sitters to sign up. Do not call Lysinka or Dot to get your name on prior to this date since no names will be placed prior to listed date in Paint Rag. Thank You

**February 6 - 3:00 p.m.** April, May, and June calendars will be put in book for sitters to sign up.

## The Paint Rag

Off Track Gallery, 510 N. Coast Hwy  
101, Encinitas, CA 92024 760-942-  
3636 Hrs: 9 a.m. to 6 p.m. Daily

### Mark Your Calendar

\* Friday, December 27th

Monthly Show Take-In

9:30 a.m. to 2:00 p.m

First come, first serve

(Please bring large paintings by  
10:30)

\*Thursday, January 2nd

Board Meeting 9:30 a.m.

Larabee House, Quail Gardens

\*Thursday, January 2nd

General Meeting

1:30 pm.

Ecke Hall, Quail Gardens

\*Monday, January 6th, 2003

Renter's Quarterly Rotation

9:00am-1:00pm

### Environmental Painters

The Environmental Painters will  
meet Jan. 7 and 14 at Torrey  
Pines State Reserve. They have  
a beautiful show at La Vida Del  
Mar for the month of December.  
There will be no scheduled  
meetings in December.

January 2003

January Judge /  
Demonstrator

Member Panel

Isabella Breasted will  
demonstrate framing, Kim  
Treffinger will demonstrate  
glass mosaics, and Karen  
Anderson will demo on  
Photography.

ATTENTION: All changes of  
address, phone, or email  
information should be made  
only to the membership  
chairperson. Either send them  
to: Jeff Brosbe, 2615 33rd  
Street, San Diego, CA 92104-  
5113 or [brosbe@cox.net](mailto:brosbe@cox.net) ,  
please.

Artist of the Month

Loretta Phoenix

“Love of color, texture, design  
and a touch of mystic ... make up  
my earliest feelings of  
enchantment. After years of  
teaching others in the business  
and cosmetic world, I opted for  
a more permanent color  
structure, making my art #1.  
After many college art courses,  
workshops, seminars; Plein-air  
paintings of which include oils,  
watercolor and mixed media;  
subject matter ranges from  
seascapes, landscapes, flower  
fields; sizes range from large to  
mini”

Loretta has been a SDAG  
member for over 25 years

Reception: Sunday January 19th  
from 1 – 4 PM  
Everyone welcome

### “Calendar Sign Up Date”

Due to complaints that Lysinka and Dot were signing up some sitters before others, we have decided to make it equal for all. It will be noted in Paint Rag when the new calendars are placed in gallery for sitters to sign up. Do not call Lysinka or Dot to get your name on prior to this date since no names will be placed prior to listed date in Paint Rag. Thank You  
February 6 - 3:00 p.m. April, May, and June calendars will be put in book for sitters to sign up.

# Member Announcements

- Art studio space for rent in art center to serious compatible artist. Rent is \$340. per month + 1/3 utilities. 144sq. ft., 24/7 access. Encinitas location. (760) 634 0314
- Room for rent in Clairemont, \$ 500/mo + 1/3 utilities; Help wanted to make greeting cards. Alessandra Colfi 858 274 6087 [welcome@awelcomehome.com](mailto:welcome@awelcomehome.com)
- Joan Grine will be instructor for classes in pastel painting in eight sessions from Jan. 13 -- Mar. 3, at 1:00-4:30, at Quail Botanical Gardens. The fee will be \$115 for Quail Garden members and \$130 for non-members. Call 760-436-3036 for registration and more information.
- Joan Grine is the guest artist at Wesley Palms for Dec. and Jan., at 2404 Loring, Pacific Beach. She will also be displaying her paintings at the San Diego Hospice for Jan. and Feb. The reception will Jan.12<sup>th</sup>.
- Lorraine Eustice and Bonnie Knight will be exhibiting their artwork at San Diego Hospice from 1/5 through 2/28/2003
- Jan Janes was accepted in the So. Cal. Regional Show at

Art Institute. Her entry was a collage titled "Fat Cats".

- Doreen Long has 2 photos in the 4<sup>th</sup> annual juried exhibition at the William D. Cannon art gallery (next to Carlsbad Library in La Costa). Show runs 12/15 - 01/25
- Mary Lake is offering a 1 day pastel workshop Jan. 25<sup>th</sup> from 9:30 to 2:30 and a 6 week course on Introduction to Drawing starting Feb. 1<sup>st</sup> from 9:30 to 2:30. Registration at Vista Adult School (760)758-7122
- Dot Dodds will have an exhibition from Dec 28<sup>th</sup> to Jan. 12<sup>th</sup> at the La Jolla Art Association Gallery in Girard St. Reception Jan. 4<sup>th</sup> from 4-7
- Jim Respass will be curating a show at the 101 Artists' Colony in Jan. The show, "Provocative Frames" will feature digital composition, photography and mixed media from some of the county's best artists. Provocative frames will run through Jan. with an artists' reception on Jan. 4th from 6 to 9 PM.
- Beginning in 2003 The Photo Factory Gallery, 733 Third Avenue in the Gaslamp in San Diego, Jeffrey R. Brosbe's Black & White Architectural and San Diego images will be offered to the public. Reception at the gallery Sunday, Jan. 26th, from 2-5 p.m. Please come.

## December Cash Awards Show Winners

**Show Judge:**  
**Carl Provder**

### **Best of Show**

James Respass "American Wheels": Good Design & Texture

### **Oil/Acrylic (O/A)**

1st Fred Remington "Torrey Pines" Good use of blues  
2nd Kate Whitley "Escondido Park" Good Brushwork  
3rd Sally Harvey "Carmel Valley" Good Brushwork

### **WaterMedia (W/M)**

1st Anna Feletii "Basket" Nice Contrast  
2nd Brian MacPartland "Dendrobium Orchid" Good Rendering  
3rd Lia Kondilis "Symphony" Good Design  
HM Anita Nugent "Moonlit In the Garden"  
HM Millie Waelchi "Monument Valley"  
HM Harriet Shoup "Long Time Passing"

### **Photography (P)**

1st Doreen Long "Circle Artist" Good Texture  
2nd Frances Everett "16 Red" Strong Motif  
3rd Jeffery Cloud "Sacred Yellow Buddah"

## Member Announcements

- Art studio space for rent in art center to serious compatible artist. Rent is \$340. per month + 1/3 utilities. 144sq. ft., 24/7 access. Encinitas location. (760) 634 0314
- Room for rent in Clairemont, \$ 500/mo + 1/3 utilities; Help wanted to make greeting cards. Alessandra Colfi 858 274 6087 welcome@awelcomehome.com
- Joan Grine will be instructor for classes in pastel painting in eight sessions from Jan. 13 -- Mar. 3, at 1:00-4:30, at Quail Botanical Gardens. The fee will be \$115 for Quail Garden members and \$130 for non-members. Call 760-436-3036 for registration and more information.
- Joan Grine is the guest artist at Wesley Palms for Dec. and Jan., at 2404 Loring, Pacific Beach. She will also be displaying her paintings at the San Diego Hospice for Jan. and Feb. The reception will Jan.12th.
- Lorraine Eustice and Bonnie Knight will be exhibiting their artwork at San Diego Hospice from 1/5 through 2/28/2003
- Jan Janes was accepted in the So. Cal. Regional Show at

Art Institute. Her entry was a collage titled "Fat Cats".

- Doreen Long has 2 photos in the 4th annual juried exhibition at the William D. Cannon art gallery (next to Carlsbad Library in La Costa). Show runs 12/15 – 01/25
- Mary Lake is offering a 1 day pastel workshop Jan. 25th from 9:30 to 2:30 and a 6 week course on Introduction to Drawing starting Feb. 1st from 9:30 to 2:30. Registration at Vista Adult School (760)758-7122
- Dot Dodds will have an exhibition from Dec 28th to Jan. 12th at the La Jolla Art Association Gallery in Girard St. Reception Jan. 4th from 4-7
- Jim Respass will be curating a show at the 101 Artists' Colony in Jan. The show, "Provocative Frames" will feature digital composition, photography and mixed media from some of the county's best artists. Provocative frames will run through Jan. with an artists' reception on Jan. 4th from 6 to 9 PM.
- Beginning in 2003 The Photo Factory Gallery, 733 Third Avenue in the Gaslamp in San Diego, Jeffrey R. Brosbe's Black & White Architectural and San Diego images will be offered to the public. Reception at the gallery Sunday, Jan. 26th, from 2-5 p.m. Please come.

## December Cash Awards Show Winners

Show Judge:  
Carl Provder

Best of Show  
James Respass "American  
Wheels": Good Design & Texture

Oil/Acrylic (O/A)  
1st Fred Remington "Torrey  
Pines" Good use of blues  
2nd Kate Whitley  
"Escondido Park" Good  
Brushwork  
3rd Sally Harvey "Carmel  
Valley" Good Brushwork

WaterMedia (W/M)  
1st Anna Feletii "Basket"  
Nice Contrast  
2nd Brian MacPartland  
"Dendrobium Orchid" Good  
Rendering  
3rd Lia Kondilis "Symphony"  
Good Design  
HM Anita Nugent "Moonlit  
In the Garden"  
HM Millie Waelchi  
"Monument Valley"  
HM Harriet Shoup "Long  
Time Passing"

Photography (P)  
1st Doreen Long "Circle  
Artist" Good Texture  
2nd Frances Everett  
"16 Red" Strong Motif  
3rd Jeffery Cloud "Sacred  
Yellow Budd

HM Paul Shilling  
"Sunburst"  
HM Jeffery Brosbe  
"Collaboration #20"

### Other Media

1st - Joan Grine (pastel) "Grand  
Mesa Colorado"  
2nd - Evelyn Cramer "Last Snow  
in Yosemite"  
3rd - Sandra Carson (woodblock)  
"Poodle"  
HM Agnes Lochte ( metal  
sculpture) "Regency"

### Mixed Media

1<sup>st</sup> Carole Larsen "San Diego  
Freeway" Good design and  
texture  
2nd Virginia Ribbel- "Red  
Earth"  
3rd Janet Finney- "Sea Palm"

### President's Choice Award:

Sylvia Boulware (water media)  
"Maine Hillside"

### Tips from the Judge/Demonstrator

Walt Disney animator and  
designer Rolly Crump said, "Don't  
design something to fit. Design,  
then select what fits."

Barbara Magdlen

# Giclee

Green Flash Photography  
announces the addition  
of a new wide format printer.

Fine art editions  
of your  
original artwork can now be  
printed on a variety of  
papers and canvas at almost  
any size.

Call for information  
and pricing.

858-272-1926

[www.greenflashphotography.com/  
giclee.html](http://www.greenflashphotography.com/giclee.html)

## Monthly Show Labels (cut out)

San Dieguito Art Guild January 2003	San Dieguito Art Guild January 2003
Artist	Artist
Title	Title
Category	Category
Medium	Medium
Price	Price

HM Paul Shilling  
“Sunburst”

HM Jeffery Brosbe  
“Collaboration #20”

#### Other Media

1st - Joan Grine (pastel) “Grand  
Mesa Colorado”

2nd - Evelyn Cramer “Last Snow  
in Yosemite”

3rd - Sandra Carson (woodblock)  
“Poodle”

HM Agnes Lochte ( metal  
sculpture) “Regency”

Tips from the  
Judge/Demonstrator

Walt Disney animator and  
designer Rolly Crump  
said, “Don’t design some-  
thing to fit. Design, then  
select what fits. Barbara  
Magdlen

#### Mixed Media

1st Carole Larsen “San Diego  
Freeway” Good design and  
texture

2nd Virginia Ribbel- “Red  
Earth”

3rd Janet Finney- “Sea Palm”

President’s Choice Award:

Sylvia Boulware (water media)  
“Maine Hillside”

#### Monthly Show Labels (cut out)

San Dieguito Art Guild

January 2003

Artist

Title

Category

Medium

Price

San Dieguito Art Guild

January 2003

Artist

Title

Category

Medium

Price

### Monthly Show Rules

1. The absolute maximum size for any piece is 38" along any outside edge (including frame). Fee for artwork under 30" is \$10. Fee for artwork 30" and larger is \$20.
2. 15% commission on sales.
3. No glass in frames larger than 22" x 24". Use plexiglass or equivalent. Pastels excluded.
4. Paintings must be framed. Oil or acrylic on wrap-around canvas excepted.
5. Frames must have multi-strand wire hanging 2-3" from top w/ends of wire taped.
6. All artwork must be original.
7. All artwork must be for sale.
8. Artwork should be less than 2 years old and not previously entered in our monthly show.
9. Label artwork on back using 2 labels.
10. Categories include: Oil & Acrylic Water Media (includes acrylic under glass); Photography; Wood Block; Prints; Etchings; Monoprints (hand-pulled by artist) & Other Media
11. Artist's entry must be in appropriate category or may be ineligible for judging
  - Any media with at least five (5) entries will be considered an additional category.
  - Artist's entry must be in appropriate category or may be ineligible for judging.

### **Paint Rag Information**

Send relevant information via email to:  
Yanina Cambareri, Editor. E-mail:  
yaninac@pacbell.net (760)944-4433

**Newsletter info due on or before 1<sup>st</sup>  
Saturday of month, following SDAG  
board meeting.**

### **Advertising Rates**

Members receive 2 lines free. \$5 over two lines, payable to "SDAG" due by 1<sup>st</sup> of the month. Non members \$15.

### **Membership**

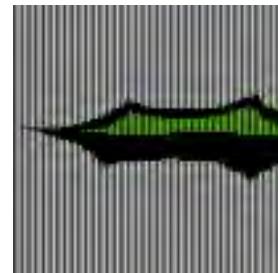
Contact Jeff Brosbe with any address, phone or e-mail Jeff Brosbe, 2615 33rd Street, San Diego, CA 92104-5113 or [brosbe@cox.net](mailto:brosbe@cox.net)

The SDAG Art Committee reserves the right to refuse any entry not conforming to these regulations.

## San Dieguito Art Guild

510 N. Coast Highway 101  
Encinitas, CA 92024  
(760)942-3636

[www.offtrackgallery.com](http://www.offtrackgallery.com)



# The Paint Rag

January 2003



### Monthly Show Rules

1. The absolute maximum size for any piece is 38" along any outside edge (including frame). Fee for artwork under 30" is \$10. Fee for artwork 30" and larger is \$20.
2. 15% commission on sales.
3. No glass in frames larger than 22" x 24". Use plexiglass or equivalent. Pastels excluded.
4. Paintings must be framed. Oil or acrylic on wrap-around canvas excepted.
5. Frames must have multi-strand wire hanging 2-3" from top w/ ends of wire taped.
6. All artwork must be original.
7. All artwork must be for sale.
8. Artwork should be less than 2 years old and not previously entered in our monthly show.
9. Label artwork on back using 2 labels.
10. Categories include: Oil & Acrylic Water Media (includes acrylic under glass); Photography; Wood Block; Prints; Etchings; Monoprints (hand-pulled by artist) & Other Media
11. Artist's entry must be in appropriate category or may be ineligible for judging
  - Any media with at least five (5) entries will be considered an additional category.
  - Artist's entry must be in appropriate category or may be ineligible for judging.

### Paint Rag Information

Send relevant information via email to:  
Yanina Cambareri, Editor. E-mail:  
yaninac@pacbell.net (760)944-4433

Newsletter info due on or before 1st  
Saturday of month, following SDAG  
board meeting.

### Advertising Rates

Members receive 2 lines free. \$5 over  
two lines, payable to "SDAG" due by  
1st of the month. Non members \$15.

### Membership

Contact Jeff Brosbe with any address,  
phone or e-mail Jeff Brosbe, 2615 33rd  
Street, San Diego, CA 92104-5113 or  
brosbe@cox.net

The SDAG Art Committee reserves the right to refuse any entry not conforming to  
these regulations.

San Dieguito  
Art Guild  
510 N. Coast Highway 101  
Encinitas, CA 92024  
(760)942-3636  
www.offtrackgallery.com

January 2003

# The San Dieguito Art Guild

presents its January 2003  
*Artist of the Month*  
*Loretta Phoenix*  
at the

## Offtrack Gallery

Located downstairs in the  
Pannikin Coffee & Tea in the old  
Encinitas Train Station. Gallery  
Hours: 9 am to 6pm Daily



Public viewing invited to a month of seldom seen  
seascapes, landscapes, and flower fields in sizes  
from mini to maxi. Media include oils, watercolor  
and mixed-media. Open reception on Sunday,  
January 19, 2003, from 1 to 4 PM.

510 N. COAST HWY. 101 • LEUCADIA • (760) 942-3636

The San Dieguito Art Guild

presents its January 2003

Artist of the month

Loretta Phoenix

at the

Offtrack Gallery

Located downstairs in the Pannikin Coffee & Tea in the old  
Encinitas Train Station. Gallery

Hours: 9 am to 6 pm Daily

Public viewing invited to a month of seldom seen seascapes, landscapes, and flower fields in sizes from mini to maxi Media include oils, watercolor and mixed-media. Open reception on Sunday, January 19, 2003, from 1 to 4 PM.

510 N. COAST HWY. 101 • LEUCADIA • (760) 942-3636



# The Paint Rag

Off Track Gallery, 510 N. Coast Hwy 101, Encinitas, CA 92024 760-942-3636 Hrs: 9 a.m. to 6 p.m. Daily

## Mark Your Calendar

\* Friday, January 31st  
Monthly Show Take-In  
9:30 a.m. to 2:00 p.m.  
First come, first serve  
(Please large paintings by 10:30)

\* Thursday, February 6th  
Board Meeting 9:30 a.m.  
Larabee House, Quail Gardens

\* Thursday, February 6th  
General Meeting  
1:30 pm.  
Ecke Hall, Quail Gardens

## Environmental Painters

Jan. 7 and 14 Torrey Pines.  
Meet in the parking lot in front of the "lodge", (museum or ranger station) We will be there with passes.

Jan. 21 and 28 Batiquitos Lagoon. Poinsettia Lane to Batiquitos Rd. and park in the parking lot after you pass the golf club.

Feb. 4 Quail Botanical Gardens.  
Meet at the west end of the parking lot.

Feb. 11 and 18 Moonlight Beach.  
Meet at the upper parking lot.

Any questions, call Joan Grine 858-481-8783. After this Char Cee will be taking over. 760-726-1647

## February 2003

### February Judge / Demonstrator

### Rosemary KimBal

Rosemary KimBal discovered her medium of Oriental Brush Painting in 1975. Empty space in her art works as a reflecting pond of calm. In her works an unexpected turn of the brush can bring whimsy and surprise even a giggle to the observer. Her 27 years of painting are a celebration of life. From an exhibition last Winter at the Ronin Gallery in New York City, with Toko Shinoda, the national treasure of Japan and the 19th century woodblock artist Gyokusho where KimBal represented Zen painting in America to works at the Ren Brown Collection in Bodega Bay and the impressionistic landscape paintings at the Scripps Hospital Lobby in Encinitas, KimBal has shown her works throughout the United States and in Taiwan and Canada.

Influential in National and International circles that Celebrate this ancient art, Rosemary KimBal specializes in Contemporary Zen Paintings. Using a free and spontaneous technique, her paintings range from traditional to the abstract. Dancing Brush Studios is also on the web at [www.dancingbrush.com](http://www.dancingbrush.com)

## Artist of the Month

### Dustin Ortiz

Born and raised in Encinitas, California, Dustin Ortiz has demonstrated his artistic talent since his school days at Pacific View Elementary School. Dustin's appreciation for different mediums deepened in Ora O'Toole's classes. His skills were further developed with John Ratakowski at the San Dieguito Academy.

Dustin Joined the San Dieguito Art Guild at the age of 15. He graduated from the San Dieguito Academy in 2001 and is currently attending the Art Institute of California in San Diego, where he is merging his fine art with graphic design.

**Attention card sellers:** Please read carefully POS insert and keep it for future reference!!

January Calendar Chair: Cris Weatherby  
February Calendar Chair: Yanina Cambareri

## The Paint Rag

Off Track Gallery, 510 N. Coast Hwy  
101, Encinitas, CA 92024 760-942-  
3636 Hrs: 9 a.m. to 6 p.m. Daily

### Mark Your Calendar

\* Friday, January 31st  
Monthly Show Take-In  
9:30 a.m. to 2:00 p.m.  
First come, first serve  
(Please large paintings by 10:30)

\*Thursday, February 6th  
Board Meeting 9:30 a.m.  
Larabee House, Quail Gardens

\*Thursday, February 6th  
General Meeting  
1:30 pm.  
Ecke Hall, Quail Gardens

### Environmental Painters

Jan. 7 and 14 Torrey Pines.  
Meet in the parking lot in front  
of the "lodge", (museum or  
ranger station) We will be there  
with passes.

Jan. 21 and 28 Batiquitos  
Lagoon. Poinsettia Lane to  
Batiquitos Rd. and park in the  
parking lot after you pass the  
golf club.

Feb. 4 Quail Botanical Gardens.  
Meet at the west end of the  
parking lot.

Feb. 11 and 18 Moonlight Beach.  
Meet at the upper parking lot.  
Any questions, call Joan Grine 858-  
481-8783. After this Char Cee will  
be taking over. 760-726-1647

January Calendar Chair: Cris Weath-  
erby

February Calendar Chair: Yanina  
Cambareri

February Page 1

## February 2003

February Judge /  
Demonstrator

### Rosemary KimBal

Rosemary KimBal discovered her  
medium of Oriental Brush Paint-  
ing in 1975. Empty space in her  
art works as a reflecting pond of  
calm. In her works an unexpected  
turn of the brush can bring whimsy  
and surprise even a giggle to the  
observer. Her 27 years of painting  
are a celebration of life. From an  
exhibition last Winter at the Ronin  
Gallery in New York City, with  
Toko Shinoda, the national trea-  
sure of Japan and the 19th century  
woodblock artist Gyokusho where  
KimBal represented Zen painting  
in America to works at the Ren  
Brown Collection in Bodega Bay  
and the impressionistic landscape  
paintings at the Scripps Hospital  
Lobby in Encinitas, KimBal has  
shown her works throughout the  
United States and in Taiwan and  
Canada. Locally she has shown at  
Thomas Babeor Gallery and The  
Art Influential in National and  
International circles that Cel-  
ebrate this ancient art, Rosemary  
KimBal specializes in Contempo-  
rary Zen Paintings. Using a free  
and spontaneous technique, her  
paintings range from traditional  
to the abstract. Dancing Brush  
Studios is also on the web at  
[www.dancingbrush.com](http://www.dancingbrush.com)

### Artist of the Month

Dustin Ortiz

Born and raised in Encinitas,  
California, Dustin Ortiz has dem-  
onstrated his artistic talent since  
his school days at Pacific View

Elementary School. Dustin's  
appreciation for different medi-  
ums deepened in Ora O'Toole's  
classes. His skills were further  
developed with John Ratakowski  
at the San Dieguito Academy.  
Dustin Joined the San Dieguito  
Art Guild at the age of 15. He  
graduated from the San Dieguito  
Academy in 2001 and is current-  
ly attending the Art Institute of  
California in San Diego, where  
he is merging his fine art with  
graphic design.

Attention card sellers: Please  
read carefully POS insert and  
keep it for future reference!!

If Dustin is not painting in his room or working on logos for local companies, you will find him on a board either in the after or on the mountain. You'll find his love for the ocean reflected in his artwork. Over the years his style has developed dramatically and he hopes he will improve as he gets older.

## Member Announcements

- Kris Andrysiak won Honorable Mention at the Cottage Gallery in Old Town San Diego for her miniature "Woodland Spirits"
- Handmade Valentine card workshop. Taught by Alessandra Colfi Chen at Cardiff Cards Community Creative & Cultural Center. Sat. 2/1/03, 2-4pm, cost is \$45.00 & includes supplies. 760 634 0314 to register
- Ed Moores will be teaching advanced watercolor classes at the Studio of Art and Design in Solana Beach beginning Sundays, February 2, 19 16, 23. Demonstrations and class 9-12am Open Studio time 1-3pm. Call Ed 760 724-3928
- Rikki Reinholz teaches watercolor painting for beginners through advanced, on Tues and Wed mornings and evenings at the Studio of Art and Design in Solana Beach. She also has openings for group or individual art shows in her gallery. Call now for class

registration or get calendar dates for shows. 858 755-6202

- Ed Moores, Allison Christler, Rod Mindlin and Rikki Reinholz are currently showing their watercolors at The Studio of Art and Design in Solana Beach. 858 755-6202
- 35% off custom framing. Award Framing. (Old Bradford's). Call for Appt. 760.633.1351
- Michael Seewald had one photo accepted in the San Diego Art Institutes juried December show, 'Mr Red Shoes Reluctantly pay the bill, Tuscany, Italy' and took 'JURORS CHOICE' with his oil painting entitled 'Vapor Trail, Lonely roads' as well. He was also accepted into Novembers Regional Juried competition with "Artist working alabaster, Tuscany, Italy".
- Basia Koenig received 2nd Place for a stone drawing in Old Town's Cottage Gallery's annual miniature show, "Little Treasures", in December. She also published a line art Alice in Wonderland paper doll, and a Medieval paper doll, in Paper Doll Studio News. She has been invited to submit three paper dolls for special inserts in future issues.
- Basia Koenig is selling some of her art books. For a list by email, send request to basia2@mindspring.com, or send a SASE to P.O. Box 230076, Encinitas, CA 92023.
- Char-Cee's acrylic "Transition House" was accepted in the La Jolla Arts Association juried

show for February. She is showing in the "Provocative Frames" show on the 101 Artists' Colony during January.

- Char-Cee will be teaching classes in watercolor at Quail Botanical Gardens in May and June. Call 760-726-1647 for price and info.

## January Show Winners

**Show Judges:**  
**Isabella Breasted**  
**Kim Treffinger**  
**Karen Anderson**

### **Oil/Acrylic (O/A)**

FIRST: A J Dieffenbach  
"San Pascual Valley"

SECONDD: Evelyn Cramer  
"Winter Snow"

THIRD: Shirley Hawley  
"Forgotten Cypress"

### **WaterMedia (W/M)**

FIRST : Dot Dodds  
"Waiting For Paradise"

SECOND: Shirley Pentoney  
"Early Blossom"

THIRD: Yanina Cambereri  
"Zinnias On Blue"

H M: Laura Lowenstein  
"Old Barn"

### **Photography (P)**

Dustin Ortiz (page 2)

If Dustin is not painting in his room or working on logos for local companies, you will find him on a board either in the after or on the mountain. You'll find his love for the ocean reflected in his artwork. Over the years his style has developed dramatically and he hopes he will improve as he gets older.

#### Member Announcements

- Kris Andrysiak won Honorable Mention at the Gottage Gallery in Old Town San Diego for her miniature "Woodland Spirits"
- Handmade Valentine card workshop. Taught by Alessandra Colfi Chen at Cardiff Cards Community Creative & Cultural Center. Sat. 2/1/03, 2-4pm, cost is \$45.00 & includes supplies. 760 634 0314 to register
- Ed Moores will be teaching advanced watercolor classes at the Studio of Art and Design in Solana Beach beginning Sundays, February 2, 19 16, 23. Demonstrations and class 9- 12am Open Studio time 1-3pm. Call Ed 760 724-3928
- Rikki Reinholz teaches watercolor painting for beginners through advanced, on Tues and Wed mornings and evenings at the Studio of Art and Design in Solana Beach. She also has openings for group or individual art shows in her gallery. Call now for class registration or get calendar

dates for shows. 858 755-6202

- Ed Moores, Allison Christler, Rod Mindlin and Rikki Reinholz are currently showing their watercolors at The Studio of Art and Design in Solana Beach. 858 755-6202
- 35% off custom framing. Award Framing. (Old Bradford's). Call for Appt. 760.633.1351
- Michael Seewald had one photo accepted in the San Diego Art Institutes juried December show, 'Mr Red Shoes Reluctantly pay the bill, Tuscany, Italy' and took 'JURORS CHOICE' with his oil painting entitled 'Vapor Trail, Lonely roads' as well. He was also accepted into Novembers Regional Juried competition with "Artist working alabaster, Tuscany, Italy".
- Basia Koenig received 2nd Place for a stone drawing in Old Town's Cottage Gallery's annual miniature show, "Little Treasures", in December. She also published a line art Alice in Wonderland paper doll, and a Medieval paper doll, in Paper Doll Studio News. She has been invited to submit three paper dolls for special inserts in future issues.
- Basia Koenig is selling some of her art books. For a list by email, send request to basia2@mindspring.com, or send a SASE to P.O. Box 230076, Encinitas, CA 92023.
- Char-Cee's acrylic "Transition House" was accepted in the La Jolla Arts Association juried show for February. She is showing in the "Pro-

vocative Frames" show on the 101 Artists' Colony during January.

- Char-Cee will be teaching classes in watercolor at Quail Botanical Gardens in May and June. Call 760-726-1647 for price and info.

#### January Show Winners

#### Show Judges:

Isabella Breasted  
Kim Treffinger  
Karen Anderson  
Oil/Acrylic (O/A)

FIRST: A J Dieffenbach  
"San Pascual Valley"

SECONDD: Evelyn Cramer  
"Winter Snow"

THIRD: Shirley Hawley  
"Forgotten Cypress"

WaterMedia (W/M)

FIRST : Dot Dodds  
"Waiting For Paradise"

SECOND: Shirley Pentoney  
"Early Blossom"

THIRD: Yanina Cambereri  
"Zinnias On Blue"

H M: Laura Lowenstein  
"Old Barn"

Photography (P)

FIRST: Pete Fay  
"Come Along You Dogies"

SECOND: Karen Anderson  
"Going Within"

THIRD: Paul Schilling  
"Iris Morning"

### Mixed Media

FIRST: Joan Grine  
"San Clemente Canyon"

SECOND: Virginia Ribbel  
"Little One"

THIRD: Barbara Bertel  
"Temple At Dawn"

H M: Kelly Givsta  
"Knock"

### Tips from the Judge/Demonstrator

Mosaic artist Kim Treffinger and photographer Karen Anderson serve to remind us to follow our muse. Pursue the art form to which you are drawn.

Isabella Breasted stressed that professional looking presentation through attention to the details of framing, serves to enhance and add value to our work. Research on the web: [www.framing4yourself.com](http://www.framing4yourself.com)

Barbara Magdlen

# Giclee

Green Flash Photography  
announces the addition  
of a new wide format printer.

**Fine art editions**  
of your  
original artwork can now be  
printed on a variety of  
papers and canvas at almost  
any size.

Call for information  
and pricing.

858-272-1926

[www.greenflashphotography.com/  
giclee.html](http://www.greenflashphotography.com/giclee.html)

### Design From A to Z in 4 Hours

"Give Power to the Artist Within You"

- Learn key design essentials, discover the natural design laws
- A unique workbook will be provided for note taking and sketching
- NEW: bring 1 or 2 art pieces for open critique

When: Saturday, March 1, 2003 - 10:00 AM - 3:30 PM (one hour break for lunch)

Where: Cleda-Marie's Studio -724 Osborne St., Vista, CA 92084 (call for directions)

Cost: \$85 plus \$15 materials - Limited to 10 people. You must prepay to reserve your space

**Call 760-724-7240 today!**

### Monthly Show Labels (cut out)

San Dieguito Art Guild  
February 2003

Artist  
Title  
Category  
Medium  
Price

San Dieguito Art Guild  
February 2003

Artist  
Title  
Category  
Medium  
Price



FIRST: Pete Fay  
“Come Along You Dogies”

Tips from the Judge/Demonstrator

SECOND: Karen Anderson  
“Going Within”

Mosaic artist Kim Treffinger and photographer Karen Anderson serve to remind us to follow our muse. Pursue the art form to which you are drawn.

THIRD: Paul Schilling  
“Iris Morning”  
Mixed Media

Isabella Breasted stressed that professional looking presentation through attention to the details of framing, serves to enhance and add value to our work. Research on the web: [www.framing4yourself.com](http://www.framing4yourself.com) Barbara Magdlen

FIRST: Joan Grine  
“San Clemente Canyon”

SECOND: Virginia Ribbel  
“Little One”

THIRD: Barbara Bertel  
“Temple At Dawn”

H M: Kelly Givsta  
“Knock”

Design From A to Z in 4 Hours  
“Give Power to the Artist Within You”

- Learn key design essentials, discover the natural design laws
- A unique workbook will be provided for note taking and sketching
- NEW: bring 1 or 2 art pieces for open critique

When: Saturday, March 1, 2003 - 10:00 AM – 3:30 PM (one hour break for lunch)  
Where: Cleda-Marie’s Studio -724 Osborne St., Vista, CA 92084 (call for directions)  
Cost: \$85 plus \$15 materials – Limited to 10 people. You must prepay to reserve your space

Call 760-724-7240 today!

### **Monthly Show Labels (cut out)**

San Dieguito Art Guild  
February 2003

Artist  
Title  
Category  
Medium  
Price

San Dieguito Art Guild  
February 2003

Artist  
Title  
Category  
Medium  
Price

## MOTHER'S DAY WEEKEND STUDIO AND GARDEN TOUR

- Applications for being a host artist on the Mother's Day Tour have been received from Charlene Bonney, Char Cee Colosia, AliceJean Diffenbach, Kris Firebird, Jo Ann Ginepra, Darlene Katz, Annelis Schiebel, Laurel Jackson and Patricia Watkins.
- The poster contest for this event is open to all San Dieguito Art Guild members, so get out those art materials and get started. The due date for the contest is February 5th in order for the judging to take place at the board meeting on Thursday, February 6th. Deliver your unframed but protected entry to the gallery, with your name and phone number attached to the back, and leave against the wall in the west alcove. One image will be picked, for the mailer postcard, flier, and poster. Jim Respass will again do the graphics and printing of the poster. The printed art image size is twelve by fourteen inches. The original artwork should be executed in this image size or larger but always in proportion to this image size. The idea for the poster image is, of course, left up to the imagination of the artist. Subject matter should be appropriate and enhance the idea of a garden or studio art tour.
- Bobbie Harrington has started a list of docents for the tour, but we will need more volunteers. This is especially true because the artist's homes will be on view both Saturday, May 10th and Sunday, May 11th.
- The first organizational meeting will be held Wednesday, January 15th at 9:30 a.m. at the home of Patricia Watkins. Anyone interested in working on this committee is welcome. Artists, and guest artists on the tour need to attend. If you have been invited by an applicant to be at their home with your artwork then you are considered a guest artist.
- Ticket prices for the event will again be fifteen dollars, with two dollars from each ticket being donated to a non-profit organization providing higher educational scholarships to young adults from the foster child care system. The rest will pay for our expenses and produce profit. Quail Gardens will no longer receive 40% of our profits! But in order to make a good profit, we must make our tour "Visible" and "Special," because every year the competition increases!
- If you have any interesting or new ideas for our first meeting call Patricia Watkins before the meeting so she can get items on the agenda. We need to work hard to produce money for our future needs. This is only one of two chances to raise money for our group this year. The "Point of System" scanner and computer is a example of the great things we can do with our future savings!

Patricia Watkins

## MOTHER'S DAY WEEKEND STUDIO AND GARDEN TOUR

- Applications for being a host artist on the Mother's Day Tour have been received from Charlene Bonney, Char Cee Colosia, AliceJean Diffenbach, Kris Firebird, Jo Ann Ginepra, Darlene Katz, Annelis Schiebel, Laurel Jackson and Patricia Watkins.
- The poster contest for this event is open to all San Dieguito Art Guild members, so get out those art materials and get started. The due date for the contest is February 5th in order for the judging to take place at the board meeting on Thursday, February 6th. Deliver your unframed but protected entry to the gallery, with your name and phone number attached to the back, and leave against the wall in the west alcove. One image will be picked, for the mailer postcard, flier, and poster. Jim Respass will again do the graphics and printing of the poster. The printed art image size is twelve by fourteen inches. The original artwork should be executed in this image size or larger but always in proportion to this image size. The idea for the poster image is, of course, left up to the imagination of the artist. Subject matter should be appropriate and enhance the idea of a garden or studio art tour.
- Bobbie Harrington has started a list of docents for the tour, but we will need more volunteers. This is especially true because the artist's homes will be on view both Saturday, May 10th and Sunday, May 11th.
- The first organizational meeting will be held Wednesday, January 15th at 9:30 a.m. at the home of Patricia Watkins. Anyone interested in working on this committee is welcome. Artists, and guest artists on the tour need to attend. If you have been invited by an applicant to be at their home with your artwork then you are considered a guest artist.
- Ticket prices for the event will again be fifteen dollars, with two dollars from each ticket being donated to a non-profit organization providing higher educational scholarships to young adults from the foster child care system. The rest will pay for our expenses and produce profit. Quail Gardens will no longer receive 40% of our profits! But in order to make a good profit, we must make our tour "Visible" and "Special," because every year the competition increases!
- If you have any interesting or new ideas for our first meeting call Patricia Watkins before the meeting so she can get items on the agenda. We need to work hard to produce money for our future needs. This is only one of two chances to raise money for our group this year. The "Point of System" scanner and computer is a example of the great things we can do with our future savings!

Patricia Watkins

# POS System Operating Guidelines

(please keep this form for future reference)

The Point of Sales (POS) System will be installed in the gallery on January 3, 2003

During the month of January all of our sitters (some 50) will be trained in the operation of the system. Training will be at the gallery. We will continue to record our sales manually during January.

During the month of February the Guild will operate in dual mode, recording sales both manually and with the POS system.

Starting March 1, 2003 we will operate **only** on the POS system.

All items for sale in the gallery will be sold using bar code labels after that.

Operation of the credit card terminal will remain the same as now.

A sales report will be extracted from the POS every month and sent with accompanying check to every guild member who has had sales. This will include customer information.

All items received during scheduled rotations will be bar coded immediately upon take-in. The bar code labels will be attached to the artwork before they are hung or placed in the gallery. The first time we will be doing this is on the quarterly rotation on January 6, 2003.

Shrink-wrap items will be admitted **only** during regularly scheduled rotations and will be bar code labeled in the same manner as described above.

## Card Sales

1. All cards in the gallery will be sold using barcode labels. The barcode label contains encoded information, which includes a description, item number, artist ID, price and applicable fees.
2. Cards will be sold at four standard prices. They are \$3.00, \$3.50, \$4.00 and \$5.00. Re-useable barcode labels, reflecting the above price levels have been prepared for every card seller in the Guild. The barcode labels will be kept in alphabetical order in a three-ring card sales binder at the gallery desk.
3. If an artists needs special prices in addition to the four standard prices noted above they can contact Barb Mille', preferably by email at [studiomille@adelphia.net](mailto:studiomille@adelphia.net).
4. Artists are strongly encouraged to avoid extra price levels or to keep them to a minimum.
5. Additional barcode labels, reflecting the special prices, will be prepared for those requesting them. They will also be placed in the three ring binder.
6. Additional price levels shall be only at even dollar levels or at 50-cent levels. No odd numbers.
8. Every card shall continue to be marked with the name of the artist and a price, as now.
9. Card sellers shall re-price their cards as necessary during the month of January to conform to the above requirements. This is very important.
10. Cards that are improperly priced will be removed from the racks at the end of January.

The same general procedure will be employed for sale of glassware, ceramics and jewelry.

The Board solicits your full cooperation in successfully implementing the operation of the system.

POS System Operating Guidelines  
(please keep this form for future reference)

The Point of Sales (POS) System will be installed in the gallery on January 3, 2003

During the month of January all of our sitters (some 50) will be trained in the operation of the system. Training will be at the gallery. We will continue to record our sales manually during January.

During the month of February the Guild will operate in dual mode, recording sales both manually and with the POS system.

Starting March 1, 2003 we will operate only on the POS system.

All items for sale in the gallery will be sold using bar code labels after that.

Operation of the credit card terminal will remain the same as now.

A sales report will be extracted from the POS every month and sent with accompanying check to every guild member who has had sales. This will include customer information.

All items received during scheduled rotations will be bar coded immediately upon take-in. The bar code labels will be attached to the artwork before they are hung or placed in the gallery. The first time we will be doing this is on the quarterly rotation on January 6, 2003.

Shrink-wrap items will be admitted only during regularly scheduled rotations and will be bar code labeled in the same manner as described above.

#### Card Sales

1. All cards in the gallery will be sold using barcode labels. The barcode label contains encoded information, which includes a description, item number, artist ID, price and applicable fees.
2. Cards will be sold at four standard prices. They are \$3.00, \$3.50, \$4.00 and \$5.00. Re-useable barcode labels, reflecting the above price levels have been prepared for every card seller in the Guild. The barcode labels will be kept in alphabetical order in a three-ring card sales binder at the gallery desk.
3. If an artists needs special prices in addition to the four standard prices noted above they can contact Barb Mille', preferably by email at [studiomille@adelphia.net](mailto:studiomille@adelphia.net).
4. Artists are strongly encouraged to avoid extra price levels or to keep them to a minimum.
5. Additional barcode labels, reflecting the special prices, will be prepared for those requesting them. They will also be placed in the three ring binder.
6. Additional price levels shall be only at even dollar levels or at 50-cent levels. No odd numbers.
8. Every card shall continue to be marked with the name of the artist and a price, as now.
9. Card sellers shall re-price their cards as necessary during the month of January to conform to the above requirements. This is very important.
10. Cards that are improperly priced will be removed from the racks at the end of January.

The same general procedure will be employed for sale of glassware, ceramics and jewelry.  
The Board solicits your full cooperation in successfully implementing the operation of the system.

### Monthly Show Rules

1. The absolute maximum size for any piece is 38" along any outside edge (including frame). Fee for artwork under 30" is \$10. Fee for artwork 30" and larger is \$20.
2. 15% commission on sales.
3. No glass in frames larger than 22" x 24". Use plexiglass or equivalent. Pastels excluded.
4. Paintings must be framed. Oil or acrylic on wrap-around canvas excepted.
5. Frames must have multi-strand wire hanging 2-3" from top w/ends of wire taped.
6. All artwork must be original.
7. All artwork must be for sale.
8. Artwork should be less than 2 years old and not previously entered in our monthly show.
9. Label artwork on back using 2 labels.
10. Categories include: Oil & Acrylic Water Media (includes acrylic under glass); Photography; Wood Block; Prints; Etchings; Monoprints (hand-pulled by artist) & Other Media
11. Artist's entry must be in appropriate category or may be ineligible for judging
  - Any media with at least five (5) entries will be considered an additional category.
  - Artist's entry must be in appropriate category or may be ineligible for judging.

### **Paint Rag Information**

Send relevant information via email to:  
Yanina Cambareri, Editor. E-mail:  
yaninac@pacbell.net (760)944-4433

**Newsletter info due on or before 1<sup>st</sup>  
Saturday of month, following SDAG  
board meeting.**

### **Advertising Rates**

Members receive 2 lines free. \$5 over two lines, payable to "SDAG" due by 1<sup>st</sup> of the month. Non members \$15.

### **Membership**

Contact Jeff Brosbe with any address, phone or e-mail Jeff Brosbe, 2615 33rd Street, San Diego, CA 92104-5113 or [brosbe@cox.net](mailto:brosbe@cox.net)

The SDAG Art Committee reserves the right to refuse any entry not conforming to these regulations.

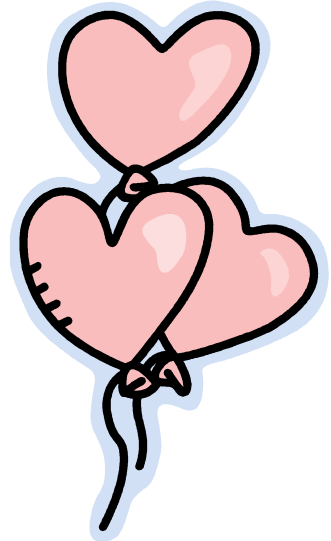
February 2003

San Dieguito  
Art Guild

510 N. Coast Highway 101  
Encinitas, CA 92024  
(760)942-3636

[www.offtrackgallery.com](http://www.offtrackgallery.com)

# The Paint Rag



## Monthly Show Rules

1. The absolute maximum size for any piece is 38" along any outside edge (including frame). Fee for artwork under 30" is \$10. Fee for artwork 30" and larger is \$20.
  2. 15% commission on sales.
  3. No glass in frames larger than 22" x 24". Use plexiglass or equivalent. Pastels excluded.
  4. Paintings must be framed. Oil or acrylic on wrap-around canvas excepted.
  5. Frames must have multi-strand wire hanging 2-3" from top w/ends of wire taped.
  6. All artwork must be original.
  7. All artwork must be for sale.
  8. Artwork should be less than 2 years old and not previously entered in our monthly show.
  9. Label artwork on back using 2 labels.
  10. Categories include: Oil & Acrylic Water Media (includes acrylic under glass); Photography; Wood Block; Prints; Etchings; Monoprints (hand-pulled by artist) & Other Media
  11. Artist's entry must be in appropriate category or may be ineligible for judging
    - Any media with at least five (5) entries will be considered an additional category.
    - Artist's entry must be in appropriate category or may be ineligible for judging.
- San Dieguito Art Guild  
510 N. Coast Highway 101  
Encinitas, CA 92024  
(760)942-3636  
[www.offtrackgallery.com](http://www.offtrackgallery.com)  
February 2003
- The SDAG Art Committee reserves the right to refuse any entry not conforming to these regulations.

## Paint Rag Information

Send relevant information via email to:  
Yanina Cambareri, Editor. E-mail:  
[yaninac@pacbell.net](mailto:yaninac@pacbell.net) (760)944-4433

Newsletter info due on or before 1st  
Saturday of month, following SDAG  
board meeting.

## Advertising Rates

Members receive 2 lines free. \$5 over two  
lines, payable to "SDAG" due by 1st of the  
month. Non members \$15.

## Membership

Contact Jeff Brosbe with any address,  
phone or e-mail Jeff Brosbe, 2615 33rd  
Street, San Diego, CA 92104-5113 or  
[brosbe@cox.net](mailto:brosbe@cox.net)



The San Dieguito Art Guild  
presents its February 2003  
Artist of the Month  
Dustin Ortiz  
at the Offtrack Gallery

Located downstairs in the old  
Pannikin Coffee & Tea in the old  
Encinitas Train Station.  
Gallery Hours: 9 am to 6 pm Daily

Dustin Ortiz works with oil and  
other media. Many of his works  
are seascapes reflecting his love  
for the ocean. Dustin captures  
the waves with brilliant color and  
movement. He attends the Art In-  
stitute of California in San Diego.

510 N. COAST HWY. 101 •  
LEUCADIA • (760) 942-3636

February 14, 2003

Publicity and Marketing  
San Dieguito Art guild  
510 North Highway 101  
Encinitas, CA 92024  
(760) 942-3636

Thank you for your recent order of business  
cards and a sample brochure for your guild. We  
are pleased to be able to offer the following pub-  
lishing services with special reduced pricing for  
your non-profit organization. Additional samples  
are included with this letter.

SDAG business cards, 2-sided, 2-color laser  
print, text and artwork  
500 cards \$25.00

SDAG brochure or flyer, 3 scanned images, full  
color, 2-sided, 7.25" X 8.5"  
(or up to 8.5 X 11")

Photo scanning and adjustment  
3 included\*  
Soft gloss sharp laser print  
Folding  
Delivery

Quantities	
100	\$100.00
500	\$400.00

\*Over 3 photos, \$25 scanning for each additional  
photo, charged at first printing only. Additional  
costs for printing may be assessed for photo-  
graphic design changes, depending on ratio  
changes of photos to text.

Sincerely,

Janice Clymer  
Owner  
Hatched Ideas Publishing

6965 El Camino Real #105-564 • Carlsbad, CA  
92009 • Phone (760) 438-0789



February 14, 2003

Publicity and Marketing  
San Dieguito Art Guild  
510 North, Highway 101  
Encinitas, CA 92024  
(760) 942-3636



Thank you for your recent order of business cards and a sample brochure for your guild. We are pleased to be able to offer the following publishing services with special reduced pricing for your non-profit organization. Additional samples are included with this letter.

SDAG business cards, 2-sided, 2-color laser print, text and artwork  
500 cards \$25.00

SDAG brochure or flyer, 3 scanned images, full color, 2-sided, 7.25" X 8.5"  
(or up to 8.5" X 11")

Photo scanning and adjustment  
3 included\*  
Soft gloss sharp laser print  
Folding  
Delivery

Quantities	
100	\$100.00
500	\$400.00

\*Over 3 photos, \$25 scanning for each additional photo, charged at first printing only. Additional costs for printing may be assessed for photographic design changes, depending on ratio changes of photos to text.

Sincerely,

Janice Clymer  
Owner  
Hatched Ideas Publishing



510 N. Hwy 101  
Encinitas, CA 92024



San Dieguito Art Guild  
Off Track Gallery  
510N. Hwy 101  
Encinitas, CA 92024

**San Dieguito**  
**Off Track Gallery**  
**Art Guild**

510 N. Hwy 101  
Encinitas  
California  
92024

*Jimmy -  
Here are a few  
ideas for you to  
toss around.  
Diane Smith*

San Dieguito Art Guild  
**SDAG**  
Off Track Gallery

510 N. Hwy 101  
Encinitas, CA 92024

**SDAG** Off Track Gallery  
San Dieguito Art Guild  
510 N. Hwy 101  
Encinitas, CA 92024



## San Dieguito Art Guild-Off Track Gallery

### 2003 Board of Directors

President  
JoAnn Ginepra

V.P. Information Systems  
Dot Renshaw

V. P. Programs  
Kim Treffinger

Secretary  
Laura Lowenstein

Treasurer  
Virginia Holt

Parliamentarian  
Judianne Shannon

Publicity  
Janice Clymer

Gallery Chairman (MGR)  
Loretta Phoenix

Gallery Renters Chairman  
Karen Anderson

Art Chair Monthly Show  
Isabella Breasted

Newsletter Chairman  
Yanina Cambareri

Membership Chairman  
Jeffrey Broske

Artist-Of-The-Month Chair  
Polly Torkar

Distribution Chairman  
Annelis Schiebel

Hospitality Chairman  
Kate Whitley



## Location

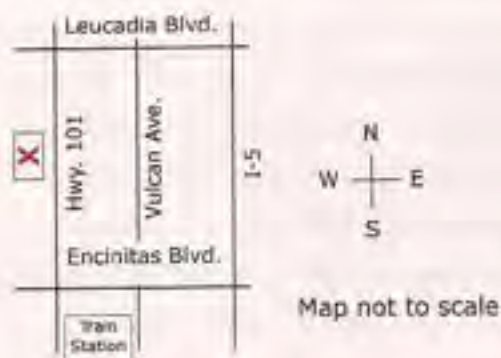
510 N. Coast Highway 101  
Encinitas, CA 92024  
(760) 942-3636

**H**ours Daily 9 a.m. to 6 p.m.

## Directions

**Driving**--From I-5 exit at Encinitas Blvd. Proceed West to Hwy 101 near the ocean and turn right. The Gallery is approximately 1 mile on the left in the old Santa Fe Railroad Train Station which also houses the Pannikin Coffee house.

**From the Encinitas Train Station**--The Gallery is approximately 1 mile north of the station.



**Web Site:**  
[www.offtrackgallery.com](http://www.offtrackgallery.com)

*Printed by "Hatched Ideas" -  
Janice Clymer?*

Building an art community

**San Dieguito**

## Off Track Gallery

**Art Guild**



510 North Coast Highway 101

**The San Dieguito Art Guild,** established in 1965, is a non-profit organization dedicated to furthering artistic understanding in the local community.

Over 250 works of art by local artists are on display at any given time. SDAG is dedicated to fostering the artistic growth of individual members through social and educational events in addition to displaying their art.

Recent works are shown and monthly membership shows are judged by professional artists. The public is encouraged to become more interested in the arts through attending the monthly shows and demonstrations.

## Location

510 N. Coast Highway 101  
Encinitas, CA 92024  
(760) 942-3636

Hours Daily 9 a.m. to 6 p.m.

## Directions

Driving - From I-5 exit at Encinitas Blvd. Proceed West to Hwy 101 near the ocean and turn right. The gallery is approximately 1 mile on the left in the old Santa Fe Railroad Train Station which also houses the Pannikin Coffee house.

From the Encinitas Train Station - The Gallery is approximately 1 mile north of the station.

Web Site:  
[www.offtrackgallery.com](http://www.offtrackgallery.com)

Printed by "Hatched Ideas", Janice Clymer?

Building an art community

San Dieguito Art Guild

Off Track Gallery

510 North Coast Highway 101

The San Dieguito Art Guild, established in 1965, is a non-profit organization dedicated to furthering artistic understanding in the local community.

Over 250 works of art by local artists are on display at any given time. SDAG is dedicated to fostering the artistic growth of individual members through social and educational events in addition to displaying their art. Recent works are shows and monthly membership shows are judged by professional artists. The public is encouraged to become more interested in the arts through attending the monthly shows and demonstrations.

---

# Off Track Gallery



## he Gallery is located

downstairs from the Pannikin Coffeehouse in the historic Old Santa Fe Railroad Station.

The Gallery has an ever changing exhibit of art by over 200 local artists.

This format is achieved in several ways. SDAG has monthly membership shows which are judged by San Diego Area professional artists. Each month a different guild member is featured as Artist of the Month, and 35 to 40 members show work upstairs and downstairs on an ongoing basis. This adds up to a display of over 250 works of art in our gallery at any given time.

Because our painters, photographers, potters, jewelers, glass artists and sculptors are local, many customers find that our artist-set prices are extremely reasonable. Considering that many of our artists are published, collected and have won show awards, the customer is lucky to find us.

S  
D  
A  
G



## embership is open

to San Diego County residents.

Fees are \$40 annually per person and \$55 per couple for two artists within the same household. Student membership is \$15 for artists ages 15 through 18. Dues are payable by September 30 of each year. As a member you are expected to devote time to the guild. You may be required to work on a project, a committee or in the gallery as a sitter. All members may submit one piece of original art to the monthly membership show.

---

## Off Track Gallery

The Gallery is located downstairs from the Pannikin Coffeehouse in the historic Old Santa Fe Railroad Station.

The Gallery has an ever changing exhibition of art by over 200 local artists.

This format is achieved in several ways. SDAG has monthly membership shows which are judged by San Diego Area professional artists. Each month a different guild member is featured as Artist of the Month, and 35 to 40 members show work upstairs and downstairs on an ongoing basis. This adds up to a display of over 250 works of art in our gallery at any given time.

Because our painters, photographers, potters, jewelers, glass artists and sculptors are local, many customers find that our artist-set prices are extremely reasonable. Considering that many of our artists are published, collected and have won show awards, the customer is lucky to find us.

Membership is open to San Diego County residents.

Fees are \$40 annually per person and \$55 per couple for two artists within the same household. Student membership is \$15 for artists ages 15 through 18. Dues are payable by September 30 of each year. As a member you are expected to devote time to the guild. You may be required to work on a project, a committee or in the gallery as a sitter. All members may submit one piece of original art to the monthly membership show.





# The Paint Rag

Off Track Gallery, 510 N. Coast Hwy 101, Encinitas, CA 92024 760-942-3636 Hrs: 9 a.m. to 6 p.m. Daily

## Mark Your Calendar

\* Friday, February 28th  
Monthly Show Take-In  
9:30 a.m. to 2:00 p.m.  
First come, first serve  
(Please large paintings by 10:30)

\* Thursday, March 6th  
Board Meeting 9:30 a.m.  
Larabee House, Quail Gardens

\* Thursday, March 6th  
General Meeting  
1:30 pm.  
Ecke Hall, Quail Gardens

\* Monday, April 7th  
Renters' Quarterly Rotation  
9:00am-1:00pm

### Reminder to all members

You are entitled to a free listing on the SDAG Web Site ([offtrackgallery.com](http://offtrackgallery.com)) and for \$25 you can have a web page. Contact Jim Respass ([jim@greenflashphotography.com](mailto:jim@greenflashphotography.com) or 858-272-1926) for details.

## March 2003

### March Judge / Demonstrator

### George Brugger

Born in Austria he graduated in architecture and art. For many years he worked in his profession in Europe and Canada. Since moving to San Diego in 1964, he studied in the adult education programs and had some excellent teachers. Robert Landry, Duane Light and Henry van Bentrum are some of them. He has worked in many mediums but prefers watercolor and acrylics, mostly medium size sheets, occasional big wall murals. George Brugger will be doing a demonstration of Northern Lights.

## Environmental Painters Update

Welcome Environmental Painters! We have a large group forming and are having a wonderful time painting out in the open at many wonderful and different places around town. If anyone has a suggestion as to where a new secret place might be please email me at - [charcee@sbcglobal.net](mailto:charcee@sbcglobal.net). After February 1st - all who paint with us need to be a member of the San Dieguito Art League/ due to insurance purposes. I plan to try and get some special shows for our group.

My cell phone is 760-420-0440 for instructions or if lost (Char Cee)

February 25: Glen Park in Cardiff

March 4<sup>th</sup>: Quail Gardens

March 11<sup>th</sup> & 18<sup>th</sup>: Buena Vista Lagoon

March 25: Mc Gee Park in Carlsbad/ Barn and old cottage house-fabulous Eucalyptus trees

April 1<sup>st</sup>: Beach Walk in Carlsbad - About a mile - going south- from Mc Gee Park

## A note from the President ...

Welcome to New Board Members! Lydia Hill is now the new Membership Chair with Diane Dudek as her assistant; Jenny Remington is now the new Publicity Chair with Cathy Staver as her assistant. Thank you new volunteers and a very special thank you to Shirley Hawley for so diligently searching for these replacements. Thank you to Isabella for offering her assistance as a liaison for Membership up until now and also offering to continue in the vacated spot until we found someone. All future resignations please have the courtesy to give a customary notification of at least two weeks or perhaps stay on until replacement can be found!

Jo Ann Ginepra



## The Paint Rag

Off Track Gallery, 510 N. Coast Hwy 101, Encinitas, CA 92024 760-942-3636 Hrs: 9 a.m. to 6 p.m. Daily

### Mark Your Calendar

\* Friday, February 28th  
Monthly Show Take-In  
9:30 a.m. to 2:00 p.m.  
First come, first serve  
(Please large paintings by 10:30)

\*Thursday, March 6th  
Board Meeting 9:30 a.m.  
Larabee House, Quail Gardens

\*Thursday, March 6th  
General Meeting  
1:30 pm.  
Ecke Hall, Quail Gardens

\*Monday, April 7th  
Renters' Quarterly Rotation  
9:00am-1:00pm

Reminder to all members  
You are entitled to a free listing on  
the SDAG Web Site (offtrackgallery.  
com) and for \$25 you can have a  
web page.  
Contact Jim Respass  
(jim@greenflashphotography.com or  
858-272-1926) for details.

### March 2003

March Judge /  
Demonstrator

George Brugger

Born in Austria he graduated in architecture and art. For many years he worked in his profession in Europe and Canada. Since moving to San Diego in 1964, he studied in the adult education programs and had some excellent teachers. Robert Landry, Duane Light and Henry van Bentrump are some of them. He has worked in many mediums but prefers watercolor and acrylics, mostly medium size sheets, occasional big wall murals. George Brugger will be doing a demonstration of Northern Lights.

### Environmental Painters Update

Welcome Environmental Painters! We have a large group forming and are having a wonderful time painting out in the open at many wonderful and different places around town. If anyone has a suggestion as to where a new secret place might be please email me at - charcee@sbcglobal.net. After February 1st - all who paint with us need to be a member of the San Dieguito Art League/ due to insurance purposes. I plan to try and get some special shows for our group.

My cell phone is 760-420-0440 for instructions or if lost (Char Cee)

February 25: Glen Park in Cardiff

March 4th: Quail Gardens

March 11th & 18th: Buena Vista Lagoon

March 25: Mc Gee Park in Carlsbad/  
Barn and old cottage house-fabulous  
Eucalyptus trees

April 1st: Beach Walk in Carlsbad -  
About a mile - going south from Mc Gee  
Park

### A note from the President ...

Welcome to New Board Members! Lydia Hill is now the new Membership Chair with Diane Dudek as her assistant; Jenny Remington is now the new Publicity Chair with Cathy Staver as her assistant. Thank you new volunteers and a very special thank you to Shirley Hawley for so diligently searching for these replacements. Thank you to Isabella for offering her assistance as a liaison for Membership up until now and also offering to continue in the vacated spot until we found someone. All future resignations please have the courtesy to give a customary notification of at least two weeks or perhaps stay on until replacement can be found!

Jo Ann Ginepra

# Member Announcements

- 35% off custom framing. Award Framing. (Old Bradford's). Call for Appt. 760.633.1351
- Alison Christler will do a watercolor demonstration for the Fallbrook Art Association on Saturday, March 15 at 1:00 PM. For those interested, there will be a critique (all media) at 11:30 AM.
- Jacquie Thye had a photo accepted as a finalist in the Canon/Photographer's Forum annual in December
- Children's Creative Workshops is looking for terrific people who like to teach art and photography to kids age 5-12. If you're interested in teaching during this popular summer program, please email Carole Larson asap at [clars@san.rr.com](mailto:clars@san.rr.com)
- Sandra Bray will be showing a selection of tropical paintings through March in the gift shop at the Cedros Garden Nursery, 330 S. Cedros Ave., Solana Beach, Ca. 92075
- Rich Hawk will show his paintings February 8 - April 12 at the Studio of Art and Design in Solana Beach. There will be a reception Saturday March 1, from 3-6pm. Come and enjoy the art, camaraderie, wine and light refreshments. For more information call the Studio (858) 755-6202 or Rich (858) 673-9686
- The Architectural Abstracts of Jeffrey R. Brosbe will be on display at the Encinitas Civic Center Art Gallery (located in the Encinitas Civic Center on 505 So. Vulcan Avenue, Encinitas, CA 92024) from 27 February through 27 March 2003. Black & white images from this series, along with images from the San Diego Scenes series may be seen at the Photo Factory Gallery in San Diego's Gaslamp District (732 Fourth Avenue, San Diego, CA 92101).
- **Marketing your Art**, a lecture given by Patricia Frischer ([www.DrawsCrowd.com](http://www.DrawsCrowd.com)) will be presented at the Digital Imagination Forum on March 5th at 7 PM. The Forum is at the 101 Artists' Colony, 25 east "E" Street, Encinitas. The lecture will include topics; "Leveraging your Talent", "New market opportunities" and "How the traditional Big City Art Market functions". This event is free and open to the public.
- Dot Renshaw, Shirley Maier, Alessandra Colfi Chen, Carol Shamrock and Jim Respass (aka the Pacific Beach Art Guild) will be showing their art at Wesley Palms, 2404 Loring Street, Pacific Beach during the months of February and March.
- Diane Dudek is exhibiting her artwork at the YMCA Gymnastics Center at 6100 Avenida Encina in Carlsbad.
- Doreen Long has the Talking Picture Department in the March, 2003 Shutterbug photography magazine.
- If you are interested in renting a small half space at the 101 Artists' Colony call call Danny at 944-6027
- The San Diego Natural History Museum will feature dramatic color landscape work by world renown local photographer Robert Turner: "Rare Places in Rare Light", from February 14<sup>th</sup> - June 1, 2003.
- Prospective La Jolla Arts Association members to be juried March 15<sup>th</sup>. Those who would like to become new members should submit their applications prior to March 8. Forms are available at the LJAA gallery at 7917 Girard Ave, in La Jolla.

## Member Announcements

- 35% off custom framing. Award Framing. (Old Bradford's). Call for Appt. 760.633.1351

- Alison Christler will do a watercolor demonstration for the Fallbrook Art Association on Saturday, March 15 at 1:00 PM. For those interested, there will be a critique (all media) at 11:30 AM.

- Jacquie Thye had a photo accepted as a finalist in the Canon/Photographer's Forum annual in December

- Children's Creative Workshops is looking for terrific people who like to teach art and photography to kids age 5-12. If you're interested in teaching during this popular summer program, please email Carole Larson asap at clars@san.rr.com

- Sandra Bray will be showing a selection of tropical paintings through March in the gift shop at the Cedros Garden Nursery, 330 S. Cedros Ave., Solana Beach, Ca. 92075

- Rich Hawk will show his paintings February 8 - April 12 at the Studio of Art and Design in Solana Beach. There will be a reception Saturday March 1, from 3-6pm. Come and enjoy the art, camaraderie, wine and light refreshments. For more information call the Studio (858) 755-6202 or Rich (858) 673- 9686

- The Architectural Abstracts of

Jeffrey R. Brosbe will be on display at the Encinitas Civic Center Art Gallery (located in the Encinitas Civic Center on 505 So. Vulcan Avenue, Encinitas, CA 92024) from 27 February through 27 March 2003. Black & white images from this series, along with images from the San Diego Scenes series may be seen at the Photo Factory Gallery in San Diego's Gaslamp District (732 Fourth Avenue, San Diego, CA 92101).

- Marketing your Art, a lecture given by Patricia Frischer (www.DrawsCrowd.com) will be presented at the Digital Imagination Forum on March 5th at 7 PM. The Forum is at the 101 Artists' Colony, 25 east "E" Street, Encinitas. The lecture will include topics; "Leveraging your Talent", "New market opportunities" and "How the traditional Big City Art Market functions". This event is free and open to the public.

- Dot Renshaw, Shirley Maier, Alessandra Colfi Chen, Carol Shamrock and Jim Respass (aka the Pacific Beach Art Guild) will be showing their art at Wesley Palms, 2404 Loring Street, Pacific Beach during the months of February and March.

- Diane Dudek is exhibiting her artwork at the YMCA Gymnastics Center at 6100 Avenida Encina in Carlsbad.

- Doreen Long has the Talking Picture Department in the March, 2003 Shutterbug photography magazine.

- If you are interested in renting a small half space at the 101 Artists' Colony call call Danny at 944-6027

- The San Diego Natural History Museum will feature dramatic color landscape work by world renown local photographer Robert Turner: "Rare Places in Rare Light", from February 14th – June 1, 2003.

- Prospective La Jolla Arts Association members to be juried March 15th. Those who would like to become new members should submit their applications prior to March 8. Forms are available at the LJAA gallery at 7917 Girard Ave, in La Jolla.

# February Show

## Winners

### Show Judge:

**Rosemary KimBal**

### Oil and Acrylic

1st Diane Dudek "Palm Pathway"  
(Reframing with more space between image and frame is suggested)

2nd Joan Nies "Urn with Water Plant"  
(Nice painterly quality in oil, drawing could have more chi (energy))

3rd Cindy Rodriguez "The Broken Heart" (Colors grow on you)

HM Ceclia Yarza "Fighting Cocks"

HM Sally Harvey "San Elijo Lagoon"  
(Reminiscent of early California landscape painters, would prefer an off-centered composition)

### Watermedia

1st Brian McPartland "Wild Iris"  
(Crisp simplicity of forms, well framed, perhaps use a narrower fillet - 3/16)

2nd Elena Wilk "Fur Merchants at the Fair"  
(Knowledgeable watercolorist, framing needs more professional design using a wider mat and narrower fillet that is professionally cut)

3rd Clair Mains "Santorini Steps"

HM Ethel Stevens "Happy Gourds"  
(Colors are congruent, freshly blended watercolor)

### Photography

1st Kirk Van Allyn "Transformational Plane "  
(Different planes are like an abstract painting, would prefer a white mat with a 3/16" or narrower brown fillet mat)

2nd Doreen Long "Kirkos for Jane"  
(Conceptual)

3rd Elizabeth Nicholson "The Cross"  
(Juxtaposition of the tree and cross are interesting, negative space is well placed)

HM Paul Shilling "Love"  
(Well executed and framed, good negative space)

### Pastel

1st Laura Lowenstein "A Serene Day"

2nd Mary Lake "Penasquitos Lagoon"

3rd Joan Grine "High Waves "  
(Excellent sky/clouds, water/waves)

### Other/Mixed Media

1st Maria Anthony "Awakening"

2nd Agnes Lochte "Serendipity"  
(Like the hand blown base)

3rd Evelyn Cramer "De Luz Creek "  
(Free as a "kid", inner child surfaced)

# Artist of the Month

Peter Fay

## "Faces of China"

Pete recently spent a month traveling all over China. He found the country fascinating but even more so, its people. With his camera ever ready he tried to capture the spirit and soul of the Chinese in their every day activities. Meeting and photographing them reinforced his strong belief that although we live a continent apart, as a people we have the same aspirations and so much in common.

Pete's exhibition will consist of approximately thirty portraits of people from 2 to 100+.

# Giclee

Green Flash Photography  
announces the addition  
of a new wide format printer.

Fine art editions  
of your  
original artwork can now be  
printed on a variety of  
papers and canvas at almost  
any size.

Call for information  
and pricing:

858-272-1926

[www.greenflashphotography.com/  
giclee.html](http://www.greenflashphotography.com/giclee.html)

## February Show Winners

Show Judge:

Rosemary KimBal

### Oil and Acrylic

1st Diane Dudek “Palm Pathway”  
(Reframing with more space  
between image and frame is sug-  
gested)

2nd Joan Nies “Urn with Water  
Plant”  
(Nice painterly quality in oil, draw-  
ing could have more chi (energy))

3rd Cindy Rodriquez “The Broken  
Heart” (Colors grow on you)

HM Ceclia Yarza “Fighting Cocks”

HM Sally Harvey “San Elijo La-  
goon”  
(Reminiscent of early California  
landscape painters, would prefer an  
off-centered composition)

### Watermedia

1st Brian McPartland  
“Wild Iris”  
(Crisp simplicity of forms, well  
framed, perhaps use a narrower fil-  
let – 3/16)

2nd Elena Wilk “Fur Merchants at  
the Fair”  
(Knowledgeable watercolorist,  
framing needs more professional  
design using a wider mat and nar-  
rower fillet that is professionally  
cut)

3rd Clair Mains “Santorini Steps”

HM Ethel Stevens “Happy Gourds”  
(Colors are congruent, freshly  
blended watercolor)

### Photography

1st Kirk Van Allyn  
“Transformational Plane “  
(Different planes are like an ab-  
stract painting, would prefer a  
white mat with a 3/16” or narrower  
brown fillet mat)

2nd Doreen Long “Kirkos for Jane”  
(Conceptual)

3rd Elizabeth Nicholson  
“The Cross”  
(Juxtaposition of the tree and cross  
are interesting, negative space is  
well placed)

HM Paul Shilling “Love”  
(Well executed and framed, good  
negative space)

### Pastel

1st Laura Lowenstein “A Serene  
Day”

2nd Mary Lake “Penasquitos La-  
goon”

3rd Joan Grine “High Waves “  
(Excellent sky/clouds, water/  
waves)

### Other/Mixed Media

1st Maria Anthony “Awakening”

2nd Agnes Lochte “Serendipity”  
(Like the hand blown base)

3rd Evelyn Cramer “De Luz  
Creek”  
(Free as a “kid”, inner child sur-  
faced)

### Artist of the Month

Peter Fay

“Faces of China”

Pete recently spent a month travel-  
ing all over China. He found the  
country fascinating but even more  
so, its people. With his camera ever  
ready he tried to capture the spirit  
and soul of the Chinese in their  
every day activities. Meeting and  
photographing them reinforced his  
strong belief that although we live  
a continent apart, as a people we  
have the same aspirations and so  
much in common.

Pete’s exhibition will consist of  
approximately thirty portraits of  
people from 2 to 100

## Mother's Day Weekend Poster Contest

Congratulations to Alison Casciano whose watercolor won the poster contest. Entries were judged at the board meeting on Thursday, February 6th. Alison's image of a distant house viewed through foliage and an entry gate will appear on the poster, postcard, and fliers. Thanks to all who entered. Entries can be retrieved from the gallery's closet on the right hand side.

## Mother's Day Weekend Tour Update

Goal's have been set, artists have been selected, publicity is cooking, and we're off and running! As chairman I'm very excited as we have an enthusiastic group of artists and helpers to make the 2003 tour a huge success. Our monetary goal is to raise \$4,000 in profit and at the same time support artist's from the guild in promoting their work. I have been so pleased with the publicity work already done by Sally Harvey, a true professional in several fields.

Ticket outlets have been procured and are listed in our early publicity. We need as many volunteers as possible to be docents. Our guild hopes to provide a very special weekend to visitors. Our next meeting is Wednesday, February 26th at 1:30 p.m. at my place, 6083 Mimulus in Rancho Santa Fe. The meeting is mandatory for host artists and guest artists. See you there!

Patricia Watkins

### Tips from the Judge/Demonstrator

Contemporary Zen painter Rosemary KimBal spoke of creating in the moment. She likes to get to the essence of her subject in just a few strokes. She reminds us that areas where you don't paint, are as important as the areas you do paint.

Barbara Magdlen

## SDAG

PRESENTS TO THE  
ARTISTS OF THE  
OFF-TRACK GALLERY

**The Pannikin Prize\***  
January Winners are:

**HIGHEST \$ SELLING ARTIST**  
SANDRA THOMAS

**MOST ITEMS SOLD**  
PATRICIA WATKINS

**TOP SELLING HOST**  
JENNY REMINGTON

**CONGRATULATIONS!**  
67 Artists sold 233 items

\*Winners receive a \$5.00 gift  
certificate  
to The Pannikin Coffee and Tea

### JOB OPPORTUNITY FOR ARTISTS/PHOTOGRAPHERS

There are 2 positions still open for seasonal secretarial jobs at the entry office of the San Diego County Fair. One would be for the Fine Arts Competition. A good art background is a plus to be able to answer questions when people call. The second position is for the International Photography and eArts Competition. A knowledge of photography and digital is important. It pays around \$10. an hour. You will work from February until a week after the fair closes in July. It's imperative they find someone soon for these positions. If interested, call Terresa Barth at 858-792-4207 x 2450. Tell them Suzanne Schmidt-Traner sent you!

## Monthly Show Labels (cut out)

San Dieguito Art Guild  
March 2003

Artist  
Title  
Category  
Medium  
Price

San Dieguito Art Guild  
March 2003

Artist  
Title  
Category  
Medium  
Price

## Mother's Day Weekend Poster Contest

Congratulations to Alison Casciano whose watercolor won the poster contest. Entries were judged at the board meeting on Thursday, February 6th. Alison's image of a distant house viewed through foliage and an entry gate will appear on the poster, postcard, and fliers. Thanks to all who entered. Entries can be retrieved from the gallery's closet on the right hand side.

Mother's Day Weekend Tour Update  
Goal's have been set, artists have been selected, publicity is cooking, and we're off and running! As chairman I'm very excited as we have an enthusiastic group of artists and helpers to make the 2003 tour a huge success. Our monetary goal is to raise \$4,000 in profit and at the same time support artist's from the guild in promoting their work. I have been so pleased with the publicity work already done by Sally Harvey, a true professional in several fields

Ticket outlets have been procured and are listed in our early publicity. We need as many volunteers as possible to be docents. Our guild hopes to provide a very special weekend to visitors. Our next meeting is Wednesday, February 26th at 1:30 p.m. at my place, 6083 Mimulus in Rancho Santa Fe. The meeting is mandatory for host artists and guest artists. See you there!  
Patricia Watkins

## SDAG PRESENTS TO THE ARTISTS OF THE OFF-TRACK GALLERY

The Pannikin Prize\*  
January Winners are:

HIGHEST \$ SELLING ARTIST  
SANDRA THOMAS

MOST ITEMS SOLD  
PATRICIA WATKINS

TOP SELLING HOST  
JENNY REMINGTON  
CONGRATULATIONS!

67 Artists sold 233 items

\*Winners receive a \$5.00 gift certificate to The Pannikin Coffee and Tea

Tips from the Judge/Demonstrator  
Contemporary Zen painter Rosemary KimBal spoke of creating in the moment. She likes to get to the essence of her subject in just a few strokes. She reminds us that areas where you don't paint, are as important as the areas you do paint.  
Barbara Magdlen

## JOB OPPORTUNITY FOR ARTISTS/PHOTOGRAPHERS

There are 2 positions still open for seasonal secretarial jobs at the entry office of the San Diego County Fair. One would be for the Fine Arts Competition. A good art background is a plus to be able to answer questions when people call. The second position is for the International Photography and eArts Competition. A knowledge of photography and digital is important. It pays around \$10. an hour. You will work from February until a week after the fair closes in July. It's imperative they find someone soon for these positions. If interested, call Teresa Barth at 858-792-4207 x 2450. Tell them Suzanne Schmidt-Traner sent you!

# POS System Update

The POS System was installed at the gallery in early January and all our Sitters have been trained during the month in its operation. We also barcode labeled all the artwork that was taken in for the Quarterly Wall Rotation in early January, some 150 pieces. Card pricing was also updated during the month by the various card sellers to correspond with the new pricing schedule that has been established. The response to the system has been very positive and everyone is cooperating in doing the necessary preparation work to put it into successful operation. And that, in fact, will occur starting February 1st when we will be going into dual mode operation. That means we will be recording our sales manually as we have always done and also operating the POS system in parallel.

If any of you have questions about the system, there is a POS Info Notebook at the gallery that provides detailed operating instructions in all phases of its operation. We urge you to read it when you are at the gallery, not once, but twice.

We have also worked up a procedure for replacing art work that has been sold between take-ins. You can find this procedure in the POS Info Book. It is important that artwork be replaced in accordance with this procedure. Alison Christler will be the person responsible for barcode labeling replaced artwork. She will do this at least once per week.

## Card Sales (repeat info from last month)

1. All cards in the gallery will be sold using barcode labels. The barcode label contains encoded information, which includes a description, item number, artist ID, price and applicable fees.
2. Cards will be sold at four standard prices. They are \$3.00, \$3.50, \$4.00 and \$5.00. Re-useable barcode labels, reflecting the above price levels have been prepared for every card seller in the Guild. The barcode labels will be kept in alphabetical order in a three-ring card sales binder at the gallery desk.
3. If an artists needs special prices in addition to the four standard prices noted above they can contact Barb Mille', preferably by email at [studiomille@adelphia.net](mailto:studiomille@adelphia.net).
4. Artists are strongly encouraged to avoid extra price levels or to keep them to a minimum.
5. Additional barcode labels, reflecting the special prices, will be prepared for those requesting them. They will also be placed in the three ring binder.
6. Additional price levels shall be only at even dollar levels or at 50-cent levels. No odd numbers.
8. Every card shall continue to be marked with the name of the artist and a price, as now.
9. Card sellers shall re-price their cards as necessary during the month of January to conform to the above requirements. This is very important.
10. Cards that are improperly priced will be removed from the racks at the end of January.

The same general procedure will be employed for sale of glassware, ceramics and jewelry. The Board solicits your full cooperation in successfully implementing the operation of the system.



## POS System Update

The POS System was installed at the gallery in early January and all our Sitters have been trained during the month in its operation. We also barcode labeled all the artwork that was taken in for the Quarterly Wall Rotation in early January, some 150 pieces. Card pricing was also updated during the month by the various card sellers to correspond with the new pricing schedule that has been established. The response to the system has been very positive and everyone is cooperating in doing the necessary preparation work to put it into successful operation. And that, in fact, will occur starting February 1st when we will be going into dual mode operation. That means we will be recording our sales manually as we have always done and also operating the POS system in parallel.

If any of you have questions about the system, there is a POS Info Notebook at the gallery that provides detailed operating instructions in all phases of its operation. We urge you to read it when you are at the gallery, not once, but twice.

We have also worked up a procedure for replacing art work that has been sold between take-ins. You can find this procedure in the POS Info Book. It is important that artwork be replaced in accordance with this procedure. Alison Christler will be the person responsible for barcode labeling replaced artwork. She will do this at least once per week.

### Card Sales (repeat info from last month)

1. All cards in the gallery will be sold using barcode labels. The barcode label contains encoded information, which includes a description, item number, artist ID, price and applicable fees.
2. Cards will be sold at four standard prices. They are \$3.00, \$3.50, \$4.00 and \$5.00. Re-useable barcode labels, reflecting the above price levels have been prepared for every card seller in the Guild. The barcode labels will be kept in alphabetical order in a three-ring card sales binder at the gallery desk.
3. If an artists needs special prices in addition to the four standard prices noted above they can contact Barb Mille', preferably by email at [studiomille@adelphia.net](mailto:studiomille@adelphia.net).
4. Artists are strongly encouraged to avoid extra price levels or to keep them to a minimum.
5. Additional barcode labels, reflecting the special prices, will be prepared for those requesting them. They will also be placed in the three ring binder.
6. Additional price levels shall be only at even dollar levels or at 50-cent levels. No odd numbers.
8. Every card shall continue to be marked with the name of the artist and a price, as now.
9. Card sellers shall re-price their cards as necessary during the month of January to conform to the above requirements. This is very important.
10. Cards that are improperly priced will be removed from the racks at the end of January.

The same general procedure will be employed for sale of glassware, ceramics and jewelry.  
The Board solicits your full cooperation in successfully implementing the operation of the system.

### Monthly Show Rules

1. The absolute maximum size for any piece is 38" along any outside edge (including frame). Fee for artwork under 30" is \$10. Fee for artwork 30" and larger is \$20.
2. 15% commission on sales.
3. No glass in frames larger than 22" x 24". Use plexiglass or equivalent. Pastels excluded.
4. Paintings must be framed. Oil or acrylic on wrap-around canvas excepted.
5. Frames must have multi-strand wire hanging 2-3" from top w/ends of wire taped.
6. All artwork must be original.
7. All artwork must be for sale.
8. Artwork should be less than 2 years old and not previously entered in our monthly show.
9. Label artwork on back using 2 labels.
10. Categories include: Oil & Acrylic Water Media (includes acrylic under glass); Photography; Wood Block; Prints; Etchings; Monoprints (hand-pulled by artist) & Other Media
11. Artist's entry must be in appropriate category or may be ineligible for judging
  - Any media with at least five (5) entries will be considered an additional category.
  - Artist's entry must be in appropriate category or may be ineligible for judging.

### **Paint Rag Information**

Send relevant information via email to:  
Yanina Cambareri, Editor. E-mail:  
yaninac@pacbell.net (760)944-4433

**Newsletter info due on or before 1<sup>st</sup>  
Saturday of month, following SDAG  
board meeting.**

### **Advertising Rates**

Members receive 2 lines free. \$5 over two lines, payable to "SDAG" due by 1<sup>st</sup> of the month. Non members \$15.

### **Membership**

Contact Lydia Hill with any address, phone or e-mail changes at (760)634-0655 or lydia2@adelphia.net

The SDAG Art Committee reserves the right to refuse any entry not conforming to these regulations.

## San Dieguito Art Guild

510 N. Coast Highway 101  
Encinitas, CA 92024  
(760)942-3636  
www.offtrackgallery.com



# The Paint Rag

March 2003

### Monthly Show Rules

1. The absolute maximum size for any piece is 38" along any outside edge (including frame). Fee for artwork under 30" is \$10. Fee for artwork 30" and larger is \$20.
2. 15% commission on sales.
3. No glass in frames larger than 22" x 24". Use plexiglass or equivalent. Pastels excluded.
4. Paintings must be framed. Oil or acrylic on wrap-around canvas excepted.
5. Frames must have multi-strand wire hanging 2-3" from top w/ ends of wire taped.
6. All artwork must be original.
7. All artwork must be for sale.
8. Artwork should be less than 2 years old and not previously entered in our monthly show.
9. Label artwork on back using 2 labels.
10. Categories include: Oil & Acrylic Water Media (includes acrylic under glass); Photography; Wood Block; Prints; Etchings; Monoprints (hand-pulled by artist) & Other Media
11. Artist's entry must be in appropriate category or may be ineligible for judging
  - Any media with at least five (5) entries will be considered an additional category.
  - Artist's entry must be in appropriate category or may be ineligible for judging.

The SDAG Art Committee reserves the right to refuse any entry not conforming to these regulations.

San Dieguito Art Guild  
510 N. Coast Highway 101  
Encinitas, CA 92024  
(760)942-3636  
[www.offtrackgallery.com](http://www.offtrackgallery.com)  
March 2003

### Paint Rag Information

Send relevant information via email to:  
Yanina Cambareri, Editor. E-mail:  
[yaninac@pacbell.net](mailto:yaninac@pacbell.net) (760)944-4433

Newsletter info due on or before 1st Saturday of month, following SDAG board meeting.

### Advertising Rates

Members receive 2 lines free. \$5 over two lines, payable to "SDAG" due by 1st of the month. Non members \$15.

### Membership

Contact Lydia Hill with any address, phone or e-mail changes at (760)634-0655 or [lydia2@adelphia.net](mailto:lydia2@adelphia.net)

# The San Dieguito Art Guild

presents its March 2003  
*Artist of the Month*  
*Peter Fay*  
at the

## Offtrack Gallery

Located downstairs in the  
Pannikin Coffee & Tea in the old  
Encinitas Train Station.  
Gallery Hours: 9 am to 6pm Daily



*"Faces of China"*

Pete recently spent a month traveling all over China. He found the country fascinating but even more so, its people. With his camera ever ready he tried to capture the spirit and soul of the Chinese in their every day activities. Meeting and photographing them reinforced his strong belief that although we live a continent apart, as a people we have the same aspirations and so much in common.

510 N. COAST HWY. 101 • LEUCADIA • (760) 942-3636

## The San Dieguito Art Guild

presents its March 2003

Artist of the Month

Peter Fay

at the

Offtrack Gallery

Located downstairs in the Pannikin Coffee & Tea in the  
old Encinitas Train Station.

Gallery Hours: 9 am to 6 pm Daily

“Faces of China”

Pete recently spent a month travelling all over China. He found the country fascinating but even more so, its people. With his camera ever ready he tried to capture the spirit and soul of the Chinese in their every day activities. Meeting and photographing them reinforced his strong belief that although we live a continent apart, as a people we have the same aspirations and so much in common.

510 N. COAST HWY. 101 • LEUCADIA • (760) 942-3636



# The Paint Rag

Off Track Gallery, 510 N. Coast Hwy 101, Encinitas, CA 92024 760-942-3636 Hrs: 9 a.m. to 6 p.m. Daily

## Mark Your Calendar

\* Friday, March 28th

Monthly Show Take-In

9:30 a.m. to 2:00 p.m.

First come, first serve

(Please large paintings by 10:30)

\* Thursday, April 3th

Board Meeting 9:30 a.m.

Larabee House, Quail Gardens

\* Thursday, April 3th

General Meeting

1:30 pm.

Ecke Hall, Quail Gardens

\* Sunday, April 6th

Floor Renters' Quarterly Rotation

9:00am-noon

Please call Sandra Thomas @ 858-756-4477 if this is a problem

\* Monday, April 7th

Wall Renters' Quarterly Rotation

9:00am-1:00pm

## Environmental Painters

March 11<sup>th</sup> & 18<sup>th</sup>: Buena Vista Lagoon

March 25: Mc Gee Park in Carlsbad

April 1<sup>st</sup>: Beach Walk in Carlsbad - About a mile - going south- from Mc Gee Park

April 2003

## April Judge / Demonstrator

*Jo Ann Ginepra*

Jo Ann has been making photographic images since the '70's, has a degree in Philosophy from UNH, and is the Business Administrator for her husband's Ob/Gyn Practice. She is the current President of our guild. She began as a commercial photographer, but in '91 changed to Fine Art. "More like a paintbrush, than a computer; more of a tool, than a machine," is how she describes her camera. Her images, although photographically created, are often perceived as being painted. The work is based on her perception of a quality of light-- either big and bold, or soft and subtle. Through longer exposures, strong ambient light and time of day she transforms the natural designs she finds into the saturated compositions you'll see.

## Artist of the Month

Janice Clymer

Janice Clymer will showcase her digitally altered photographic images. Both people and animals are depicted in vibrant local scenes. Multiple photographs taken by the artist are used to compose each picture and sharp images are contrasted with computer-generated or altered elements. The result is impressionist art designed to evoke positive emotional responses and involvement with the subject. The limited edition images are signed and printed with archival inks and paper.

Her web site is  
[www.hatchedideas.com](http://www.hatchedideas.com).

## A NOTE FROM THE HANGING CREW

We have been getting several pieces of artwork each month that requires rewiring before it can be hung. We would like to ask all artists to please to please attach wire 1/3 of the way down the length of your artwork and make sure that you use picture wire that is pulled tight. Faulty wiring is unsafe for your artwork and those who are viewing it! Thank you!

## The Paint Rag

Off Track Gallery, 510 N. Coast Hwy 101, Encinitas, CA 92024 760-942-3636 Hrs: 9 a.m. to 6 p.m. Daily

### Mark Your Calendar

\* Friday, March 28th  
Monthly Show Take-In  
9:30 a.m. to 2:00 p.m.  
First come, first serve  
(Please large paintings by 10:30)

\*Thursday, April 3th  
Board Meeting 9:30 a.m.  
Larabee House, Quail Gardens

\*Thursday, April 3th  
General Meeting  
1:30 pm.  
Ecke Hall, Quail Gardens

\*Sunday, April 6th  
Floor Renters' Quarterly Rotation  
9:00am-noon  
Please call Sandra Thomas @ 858-756-4477 if this is a problem

\*Monday, April 7th  
Wall Renters' Quarterly Rotation  
9:00am-1:00pm

### Environmental Painters

March 11th & 18th: Buena Vista  
Lagoon  
March 25: Mc Gee Park in Carlsbad

April 1st: Beach Walk in Carlsbad -  
About a mile - going south- from Mc  
Gee Park

### April 2003

#### April Judge / Demonstrator

#### Jo Ann Ginepra

Jo Ann has been making photographic images since the '70's, has a degree in Philosophy from UNH, and is the Business Administrator for her husband's Ob/Gyn Practice. She is the current President of our guild. She began as a commercial photographer, but in '91 changed to Fine Art. "More like a paintbrush, than a computer; more of a tool, than a machine," is how she describes her camera. Her images, although photographically created, are often perceived as being painted. The work is based on her perception of a quality of light-- either big and bold, or soft and subtle. Through longer exposures, strong ambient light and time of day she transforms the natural designs she finds into the saturated compositions you'll see.

### Artist of the Month

#### Janice Clymer

Janice Clymer will showcase her digitally altered photographic images. Both people and animals are depicted in vibrant local scenes. Multiple photographs taken by the artist are used to compose each picture and sharp images are contrasted with computer-generated or altered elements. The result is impressionist art designed to evoke positive emotional responses and involvement with the subject. The limited edition images are signed and printed with archival inks and paper.

Her web site is  
[www.hatchedideas.com](http://www.hatchedideas.com).

#### A NOTE FROM THE HANGING CREW

We have been getting several pieces of artwork each month that requires rewiring before it can be hung. We would like to ask all artists to please to please attach wire 1/3 of the way down the length of your artwork and make sure that you use picture wire that is pulled tight. Faulty wiring is unsafe for your artwork and those who are viewing it! Thank you!

# Member Announcements

- 35% off custom framing. Award Framing. (Old Bradford's). Call for Appt. 760.633.1351
- TOP DRY MEDIA ARTISTS ORGANIZING:

A small, juried organization for artists working in dry or drawing (non-paint) media is being kicked off this spring by colored pencil artists Karen Rhiner and Kathleen McLeod, and some members of the San Dieguito Art Guild may be eligible. The as-yet-unnamed group will be limited to 25 members, will meet in members' homes and studios, and will mount an annual members-only exhibition. Artists working in such media as pastels, colored pencils, pen and ink, graphite, charcoal, conte, oil pastels or etching (or are willing to call what they do drawing) are welcome to try out.

Jurors on May 13 will be members of the Artists Salon (Ellen Phillips, Mary Lynn Dominguez, Judy Bethel, Rosalie Dosik, Anne Abendroth, Shirley Bahnsen) plus Rhiner and McLeod. Members will be selected on the excellence of their work. There will be no fee. Artists who would like more information or a jurying packet may contact Karen Rhiner (858-278-7306, [alkari@san.rr.com](mailto:alkari@san.rr.com)) or Kathleen McLeod (760-789-7944, [lamagoddes@aol.com](mailto:lamagoddes@aol.com)).

- Landscapes by the Grasshopper Art Group (Nina Jumps, Kathy McChesney, Sonja Roes, Mona Segal, Pat Silver, and Tam Stautland) are on exhibit at Mission Trails Regional Park (619-668-3275) from April 12 thru May 30. Please join us for a Reception Sunday, April 13 from 1-3 pm.
- Char Cee won "best of show" at the Carlsbad Oceanside Art Gallery and will have works on display in the month of May.

## **Tips from the Judge/Demonstrator**

George Brugger keeps acrylic paint moist by squeezing the paints onto wet paper towel. When you begin to work, don't be intimidated by pristine arches watercolor paper. As an artist, the cost of paper is the least of expenses.

Barbara Magdlen

## ***Alison Christler***

### **"THE BEST OF THE BEST TECHNIQUES"**

**The very best dozen things  
I've learned in two dozen  
workshops**

One-day watercolor workshop for  
the Fallbrook Art Association

10:00 AM - 4:00 PM, Saturday  
April 5, 2003  
Hill Top Center  
331 East Elder St.  
Fallbrook

Workshops are \$50 (\$25 for members of Fallbrook Art Association). For reservations, send check (made out to Alison Christler) to Joan Nied, 335570 Lancewood Way, Fallbrook, CA92028. For directions, call Alison: (760) 942-5895

## **WANT TO PAINT IN PROVENCE AND TUSCANY in the fall???**

--- stay in the Chateau du Val de Ceze (originally a castle in the Ceze River Valley in Provence) and paint the picturesque stone towns clinging to the mountainsides???

--- or stay at a centuries-old farm estate and paint the quaint stone villages set in idyllic panoramas south of Siena in Tuscany???

Our trip is over half full already, so if you're planning to go (or if you don't have a brochure yet!) call or email Alison Christler (760-942-5804) [abcchristler@aol.com](mailto:abcchristler@aol.com)



## Member Announcements

- 35% off custom framing. Award Framing. (Old Bradford's). Call for Appt. 760.633.1351

- TOP DRY MEDIA ARTISTS ORGANIZING:

A small, juried organization for artists working in dry or drawing (non-paint) media is being kicked off this spring by colored pencil artists Karen Rhiner and Kathleen McLeod, and some members of the San Dieguito Art Guild may be eligible. The as-yet-unnamed group will be limited to 25 members, will meet in members' homes and studios, and will mount an annual members-only exhibition. Artists working in such media as pastels, colored pencils, pen and ink, graphite, charcoal, conte, oil pastels or etching (or are willing to call what they do drawing) are welcome to try out. Jurors on May 13 will be members of the Artists Salon (Ellen Phillips, Mary Lynn Dominguez, Judy Bethel, Rosalie Dosik, Anne Abendroth, Shirley Bahnson) plus Rhiner and McLeod. Members will be selected on the excellence of their work. There will be no fee. Artists who would like more information or a jurying packet may contact Karen Rhiner (858- 278-7306, [alkari@san.rr.com](mailto:alkari@san.rr.com)) or Kathleen McLeod (760-789-7944, [lamagoddes@aol.com](mailto:lamagoddes@aol.com)).

- Landscapes by the Grasshopper Art Group (Nina Jumps, Kathy McChesney, Sonja Roes, Mona Segal, Pat Silver, and Tam Stautland) are on exhibit at Mission Trails Regional Park (619-668-3275) from April 12 thru May 30. Please join us for a Reception Sunday, April 13 from 1-3 pm.

- Char Cee won "best of show" at the Carlsbad Oceanside Art Gallery and

will have works on display in the month of May.

## Tips from the Judge/Demonstrator

George Brugger keeps acrylic paint moist by squeezing the paints onto wet paper towel. When you begin to work, don't be intimidated by pristine arches watercolor paper. As an artist, the cost of paper is the least of expenses.

Barbara Magdlen

Alison Christler

## "THE BEST OF THE BEST TECHNIQUES"

The very best dozen things I've learned in two dozen workshops

One-day watercolor workshop for the Fallbrook Art Association

10:00 AM - 4:00 PM, Saturday  
April 5, 2003  
Hill Top Center  
331 East Elder St.  
Fallbrook

Workshops are \$50 (\$25 for members of Fallbrook Art Association). For reservations, send check (made out to Alison Christler) to Joan Nied, 335570 Lancewood Way, Fallbrook, CA92028. For directions, call Alison: (760) 942-5895

## WANT TO PAINT IN PROVENCE AND TUSCANY in the fall???

--- stay in the Chateau du Val de Ceze (originally a castle in the Ceze River Valley in Provence) and paint the picturesque stone towns clinging to the mountainsides???

--- or stay at a centuries-old farm estate and paint the quaint stone villages set in idyllic panoramas south of Siena in Tuscany???

Our trip is over half full already, so if you're planning to go (or if you don't have a brochure yet!) call or email Alison Christler (760-942-5804) [abcchristler@aol.com](mailto:abcchristler@aol.com)

# March Show

## Winners

**Show Judge:**  
**George Brugger**

### Oil / Acrylic

- 1<sup>st</sup> Elizabeth Nicholson "I Dreamed Of An Earthquake"  
2<sup>nd</sup> Sylvia Moonier "White River"  
3<sup>rd</sup> Lauren Jackson "Breakthrough"  
HM Avra Alexiades "Running Horse"  
HM Janice Rupert "Boating"  
HM AJ Dieffenbach "Early Spring"

### Watermedia

- 1<sup>st</sup> Elena Wilck "Rocky Shore"  
2<sup>nd</sup> Harriet Shoup "What About Tomorrow"  
3<sup>rd</sup> Sally Bly "Calla Lily"  
HM Polly Torkar "Poppies"  
HM Dan Engstrom "Branches"  
HM Diane Burch "Welcome to San Diego"

### Photography

- 1<sup>st</sup> Steven Mullensky "Red Wall"  
2<sup>nd</sup> Kirk Van Allen "Highlighter"  
3<sup>rd</sup> Althea Steinisser "Arranged in Stone"  
HM Frances Everett "North County Winter"  
HM Paul Shilling "Sea Nettle"

### Mixed and Other Media

- 1<sup>st</sup> Joan Grine "Torrey Pines Trail"  
2<sup>nd</sup> Claudia Moonier "Treasure of My Heart"

- 3<sup>rd</sup> Lariss Vishtell "Abstract Red"  
HM Shirley Hawley "Intertwined"  
HM Bobbie Harrington "Days Gone By"  
HM Monique Cox "Nature"

## Mother's Day Weekend Tour Update

A lot of guild members have been working behind the scene on the Mother's Day Tour. Jim Respass has used his magic mouse to design the poster and flier using Alison Casciano's watercolor. Darlene Katz and Lauren Jackson are working on the ticket and postcard respectively. Sally Harvey has approached publicity with a broad bush and achieved the following promises. San Diego Magazine will do a short article plus photo on Jo Ann Ginepra, North County Times Preview Magazine will do a short article plus photo on Darlene Katz, Ranch and Cove will do a short article plus photo on Patricia Watkins, Decor and Style will do a large article on four artists, and Coast News will do a short article on Charlene Bonney. We are keeping our fingers crossed for even more good news. Char Cee is organizing the finances, AliceJean and Bobbi are finding our docents and many others are working behind their easels to make this year a great success.

AliceJean Dieffenbach is unable to be a host artist on the tour, and was replaced with the home and garden of Debbie Loeschner who also lives in Rancho Santa Fe. Debbie is not an artist, but has graciously offered her abode. I have decided to place four of the environmental painters at her house on Saturday. These painters include Joan Grine, Yanina Cambareri, Diane Dudek, and

Lidia Hill. Two other environmental painters, Sue Kessinger and Mary Lake will show on Saturday at Annelis Schiebel's home. As you see we have moved the Environmental painters from Buena Vista Lagoon to homes. This solves several problems and will make the painters more comfortable.

Tickets, postcards, posters, and fliers will be available by April 1st. If available by the next Mother's Day Meeting on Wednesday, March 26th at 1:30 p.m., some tickets, postcards, and fliers will be distributed to host and guest artists for distribution.

When tickets become available in the Gallery on April 1st, it is important to know that tickets, receipt book, and monies will once again be kept separate from the old cash drawer and the POS system. All pertinent items will be kept in a plastic fill folder in the locking file cabinet to the right side of the desk. Look for instructions in this folder or posted on or near the desk.

Patricia Watkins

**MAY AND JUNE**  
**Mondays 9:30 AM - 2:30 PM**  
**Watercolor and Drawing**  
**Workshop**  
(Beginners Welcome)

Paint from your creative spirit  
Line and Color

Learn techniques of watercolor

**CHAR CEE WORKSHOPS**  
**Quail Botanical Gardens**  
760-436-3036 for reservations  
\$115 members, \$130 non-members for  
8 sessions  
Classes start promptly at 9:30 AM  
(760)726-1647 or (760)420-0440  
CharCee

## March Show Winners

Show Judge:  
George Brugger

### Oil / Acrylic

1st Elizabeth Nicholson "I  
Dreamed Of An Earthquake"  
2nd Sylvia Moonier "White River"  
3rd Lauren Jackson  
"Breakthrough"  
HM Avra Alexiades "Running  
Horse"  
HM Janice Rupert "Boating"  
HM AJ Dieffenbach "Early Spring"

### Watermedia

1st Elena Wilck  
"Rocky Shore"  
2nd Harriet Shoup  
"What About Tomorrow"  
3rd Sally Bly "Calla Lily"  
HM Polly Torkar  
"Poppies"  
HM Dan Engstrom  
"Branches"  
HM Diane Burch  
"Welcome to San Diego"

### Photography

1st Steven Mullensky  
"Red Wall"  
2nd Kirk Van Allen  
"Highlighter"  
3rd Althea Steinisser  
"Arranged in Stone"  
HM Frances Everett "North County  
Winter"  
HM Paul Shilling  
"Sea Nettle"

### Mixed and Other Media

1st Joan Grine  
"Torrey Pines Trail"  
2nd Claudia Moonier "Treasure of  
My Heart"  
3rd Lariss Vishtell  
"Abstract Red"  
HM Shirley Hawley

"Intertwined"  
HM Bobbie Harrington  
"Days Gone By"  
HM Monique Cox  
"Nature"

### Mother's Day Weekend Tour Up- date

A lot of guild members have been working behind the scene on the Mother's Day Tour. Jim Respass has used his magic mouse to design the poster and flier using Alison Casciano's watercolor. Darlene Katz and Lauren Jackson are working on the ticket and postcard respectively. Sally Harvey has approached publicity with a broad bush and achieved the following promises. San Diego Magazine will do a short article plus photo on Jo Ann Ginepra, North County Times Preview Magazine will do a short article plus photo on Darlene Katz, Ranch and Cove will do a short article plus photo on Patricia Watkins, Decor and Style will do a large article on four artists, and Coast News will do a short article on Charlene Bonney. We are keeping our fingers crossed for even more good news. Char Cee is organizing the finances, AliceJean and Bobbi are finding our docents and many others are working behind their easels to make this year a great success.

AliceJean Dieffenbach is unable to be a host artist on the tour, and was replaced with the home and garden of Debbie Loescher who also lives in Rancho Santa Fe. Debbie is not an artist, but has graciously offered her abode. I have decided to place four of the environmental painters at her house on Saturday. These painters include Joan Grine, Yanina Cambareri, Diane Dudek, and Lidia

Hill. Two other environmental painters, Sue Kessinger and Mary Lake will show on Saturday at Annelis Schiebel's home. As you see we have moved the Environmental painters from Buena Vista Lagoon to homes. This solves several problems and will make the painters more comfortable.

Tickets, postcards, posters, and fliers will be available by April 1st. If available by the next Mother's Day Meeting on Wednesday, March 26th at 1:30 p.m., some tickets, postcards, and fliers will be distributed to host and guest artists for distribution. When tickets become available in the Gallery on April 1st, it is important to know that tickets, receipt book, and monies will once again be kept separate from the old cash drawer and the POS system. All pertinent items will be kept in a plastic fill folder in the locking file cabinet to the right side of the desk. Look for instructions in this folder or posted on or near the desk.

Patricia Watkins

### MAY AND JUNE

Mondays 9:30 AM – 2:30 PM  
Watercolor and Drawing Workshop  
(Beginners Welcome)

Paint from your creative spirit  
Line and Color

Learn techniques of watercolor  
**CHAR CEE WORKSHOPS**  
Quail Botanical Gardens  
760-436-3036 for reservations  
\$115 members, \$130 non-members  
for  
8 sessions  
Classes start promptly at 9:30 AM  
(760)726-1647 or (760)420-0440  
CharCee

# Giclee

Green Flash Photography  
announces the addition  
of a new wide format printer.

Fine art editions  
of your  
original artwork can now be  
printed on a variety of  
papers and canvas at almost  
any size.

Call for information  
and pricing.

858-272-1926

[www.greenflashphotography.com/  
giclee.html](http://www.greenflashphotography.com/giclee.html)

**TO ALL MOTHERS DAY EXHIBITORS:** Deadline for your "photograph" of your artwork is April 1. Deliver to the gallery and place in the box marked "Mothers Day Photographs". The box will be behind the desk for that collection day. I will be picking them up April 2nd. Make sure that your photographs are GOOD representations of your work, and that the image fills the frame. Don't take a flash picture of it straight on if you are photographing an image under glass. (Consider having a photographer do it for you.) Hosts will make an 8X10 photo and guest artists will make a 5X7.

Do not wait until the last minute to get your images photographed and printed! Hosts, please remind your guests about the deadline.--

Jo Ann Ginepra

## **FASTFRAME CUSTOM FRAMERS OF ENCINITAS (at Henrys Shopping Ctr.)**

FASTFRAME is now offering the following benefits to Artist:

- \*Use of Facilities for Artist Presentations
- \*Deep Discounts to Artist for Frame purchase
- \*Referral Fees & Rebates for Bringing Clients in for purchase
- \*Sponsor Art Shows

FASTFRAME are owner operated and are 200 + stores across America, we have negotiated deep discounts with our moulding suppliers.

Please Contact Virginia Weng or Douglas Wellington for details @  
760-9436314

MONTH: April	TAKE-IN TAG-SDAG Monthly Show (Print CLEARLY!!)
Artist's Name:	
Item #:	
Entry Title:	
Department #:	
Vendor ID:	
Commission: Y/N?	
Price:	
Medium:	

**IMPORTANT!!** Please do not park in the Pannikin parking lot during take-in!

TO ALL MOTHERS DAY EXHIBITORS: Deadline for your “photograph” of your artwork is April 1. Deliver to the gallery and place in the box marked “Mothers Day Photographs”. The box will be behind the desk for that collection day. I will be picking them up April 2nd. Make sure that your photographs are GOOD representations of your work, and that the image fills the frame. Don’t take a flash picture of it straight on if you are photographing an image under glass. (Consider having a photographer do it for you.) Hosts will make an 8X10 photo and guest artists will make a 5X7.

Do not wait until the last minute to get your images photographed and printed! Hosts, please remind your guests about the deadline.--

Jo Ann Ginepra

FASTFRAME CUSTOM FRAMERS OF ENCINITAS  
(at Henrys Shopping Ctr.)

FASTFRAME is now offering the following benefits to Artist:

- \*Use of Facilities for Artist Presentations
- \*Deep Discounts to Artist for Frame purchase
- \*Referral Fees & Rebates for Bringing Clients in for purchase
- \*Sponsor Art Shows

FASTFRAME are owner operated and are 200 + stores across America, we have negotiated deep discounts with our moulding suppliers.

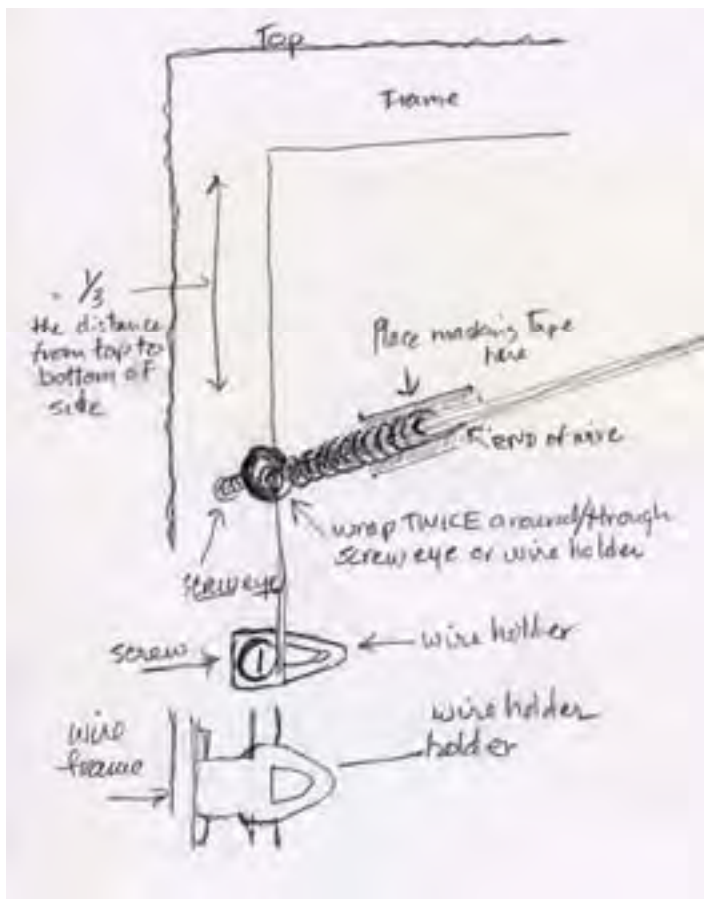
Please Contact Virginia Weng or Douglas Wellington for details @  
760-9436314

**Regarding Monthly Show Entries:** A gentle reminder from Izzie—PLEASE make sure your entries are properly framed or they will be rejected. I most concerned about the wire in the back:

- 1) The wire must be heavy enough to bear the load of that piece of artwork. One size *does not* fit all!
- 2) You should place the screw eyes or metal wire holders about 1/3rd of the way down the back sides of the artwork. Measure from the top on both sides. If you put the screw eyes too far down toward the middle, the upper part of the artwork will hang much too far away from the wall. Don't make the wire *too tight* because it will be difficult if not impossible to hang. There must be room for the hanger to move his/her hand up between the artwork and the wall in order to place the artwork on the hook.
- 3) The wire must be wound through the screw eye twice at least then wound back around the main wire. Each new coil must be right against the previous one so that the whole excess piece of wire is tightly wound around the main wire right next to the screw eye or holder at the side of the artwork. The wire coils should measure about  $\frac{1}{2}$ " to 1-1/2" wide depending on the size of the artwork. Larger pieces will have more excess wire. \*See the illustration below:
- 4) Once you have finished wrapping the wire place a small piece of masking tape neatly over the end of the wire so that anyone handling the artwork will not puncture him/herself with it accidentally.

If you ever have questions about framing, what you can and what you can't do, just call me at 760-436-2091. Thanks!

Isabella



## SDAG

PRESENTS TO THE  
ARTISTS OF THE  
OFF-TRACK GALLERY

**The Pannikin Prize\***  
February Winners are:

**HIGHEST \$ SELLING ARTIST**  
ALICE JEAN DIEFFENBACH

**MOST ITEMS SOLD**  
LYSINKA OTTO

**TOP SELLING HOST**  
BARBARA MILLE

**CONGRATULATIONS!**  
75 Artists sold 283 items

\*Winners receive a \$5.00 gift  
certificate  
to The Pannikin Coffee and Tea

\*

Regarding Monthly Show Entries: A gentle reminder from Izzie—PLEASE make sure your entries are properly framed or they will be rejected. I most concerned about the wire in the back:

- 1) The wire must be heavy enough to bear the load of that piece of artwork. One size does not fit all!
- 2) You should place the screw eyes or metal wire holders about 1/3rd of the way down the back sides of the artwork. Measure from the top on both sides. If you put the screw eyes too far down toward the middle, the upper part of the artwork will hang much too far away from the wall. Don't make the wire too tight because it will be difficult if not impossible to hang. There must be room for the hanger to move his/her hand up between the artwork and the wall in order to place the artwork on the hook.
- 3) The wire must be wound through the screw eye twice at least then wound back around the main wire. Each new coil must be right against the previous one so that the whole excess piece of wire is tightly wound around the main wire right next to the screw eye or holder at the side of the artwork. The wire coils should measure about ½" to 1-1/2" wide depending on the size of the artwork. Larger pieces will have more excess wire. \*See the illustration below:
- 4) Once you have finished wrapping the wire place a small piece of masking tape neatly over the end of the wire so that anyone handling the artwork will not puncture him/herself with it accidentally.

If you ever have questions about framing, what you can and what you can't do, just call me at 760-436-2091. Thanks!

Isabella

SDAG  
PRESENTS TO THE  
ARTISTS OF THE  
OFF-TRACK GALLERY

The Pannikin Prize\*  
February Winners are:

HIGHEST \$ SELLING ARTIST  
ALICE JEAN DIEFFENBACH

MOST ITEMS SOLD  
LYSINKA OTTO

TOP SELLING HOST  
BARBARA MILLE

CONGRATULATIONS!  
75 Artists sold 283 items

\*Winners receive a \$5.00 gift  
certificate  
to The Pannikin Coffee and Tea

### Monthly Show Rules

1. The absolute maximum size for any piece is 38" along any outside edge (including frame). Fee for artwork under 30" is \$10. Fee for artwork 30" and larger is \$20.
2. 15% commission on sales.
3. No glass in frames larger than 36" on any direction. Use plexiglass or equivalent. Pastels excluded.
4. Paintings must be framed. Oil or acrylic on wrap-around canvas excepted.
5. Frames must have multi-strand wire hanging 2-3" from top w/ends of wire taped.
6. All artwork must be original.
7. All artwork must be for sale.
8. Artwork should be less than 2 years old and not previously entered in our monthly show.
9. Label artwork on back using 2 labels.
10. Categories include: Oil & Acrylic Water Media (includes acrylic under glass); Photography; Wood Block; Prints; Etchings; Monoprints (hand-pulled by artist) & Other Media
11. Artist's entry must be in appropriate category or may be ineligible for judging
  - Any media with at least five (5) entries will be considered an additional category.
  - Artist's entry must be in appropriate category or may be ineligible for judging.

### **Paint Rag Information**

Send relevant information via email to:  
Yanina Cambareri, Editor. E-mail:  
yaninac@pacbell.net (760)944-4433

**Newsletter info due on or before 1<sup>st</sup>  
Saturday of month, following SDAG  
board meeting.**

### **Advertising Rates**

Members receive 2 lines free. \$5 over two lines, payable to "SDAG" due by 1<sup>st</sup> of the month. Non members \$15.

### **Membership**

Contact Lydia Hill with any address, phone or e-mail changes at (760)634-0655 or  
lydia2@adelphia.net

The SDAG Art Committee reserves the right to refuse any entry not conforming to these regulations.

## San Dieguito Art Guild

510 N. Coast Highway 101  
Encinitas, CA 92024  
(760)942-3636

[www.offtrackgallery.com](http://www.offtrackgallery.com)

# The Paint Rag

April 2003



### Monthly Show Rules

1. The absolute maximum size for any piece is 38" along any outside edge (including frame). Fee for artwork under 30" is \$10. Fee for artwork 30" and larger is \$20.

2. 15% commission on sales.

3. No glass in frames larger than 36" on any direction. Use plexiglass or equivalent. Pastels excluded.

4. Paintings must be framed. Oil or acrylic on wrap-around canvas excepted.

5. Frames must have multi-strand wire hanging 2-3" from top w/ ends of wire taped.

6. All artwork must be original.

7. All artwork must be for sale.

8. Artwork should be less than 2 years old and not previously entered in our monthly show.

9. Label artwork on back using 2 labels.

10. Categories include: Oil & Acrylic Water Media (includes acrylic under glass); Photography; Wood Block; Prints; Etchings; Monoprints (hand-pulled by artist) & Other Media

11. Artist's entry must be in appropriate category or may be ineligible for judging

- Any media with at least five (5) entries will be considered an additional category.

- Artist's entry must be in appropriate category or may be ineligible for judging.

### Paint Rag Information

Send relevant information via email to:

Yanina Cambareri, Editor. E-mail: yaninac@pacbell.net (760)944-4433

Newsletter info due on or before 1st Saturday of month, following SDAG board meeting.

### Advertising Rates

Members receive 2 lines free. \$5 over two lines, payable to "SDAG" due by 1st of the month. Non members \$15.

### Membership

Contact Lydia Hill with any address, phone or e-mail changes at (760)634-0655 or lydia2@adelphia.net

The SDAG Art Committee reserves the right to refuse any entry not conforming to these regulations.

San Dieguito

Art Guild

510 N. Coast Highway 101

Encinitas, CA 92024

(760)942-3636

www.offtrackgallery.com

April 2003



# The Paint Rag

Off Track Gallery, 510 N. Coast Hwy 101, Encinitas, CA 92024 760-942-3636 Hrs: 9 a.m. to 6 p.m. Daily

## Mark Your Calendar

\* Friday, April 25th  
Monthly Show Take-In  
9:30 a.m. to 2:00 p.m.  
First come, first serve  
(Please large paintings by 10:30)

\* Thursday, May 1st  
Board Meeting 9:30 a.m.  
Larabee House, Quail Gardens

\* Thursday, May 1st  
General Meeting  
1:30 pm.  
Ecke Hall, Quail Gardens

## Environmental Painters

April 8th and the 15th -- Flower  
Fields in Carlsbad / small  
entrance fee

April 22th and 29th - Art  
Sculpture Gardens at  
Manchester \ east of freeway to  
Manchester then left/ 3700  
Block of Manchester.

May 5th - La Jolla / Children's  
Pool off Coast Blvd.

Call Char Cee for additional  
directions: 760-430-0440

**May 2003**

## May Judge / Demonstrator Marija Kae Rodriguez

Kae was recently published in the Winter 2003 issue of Watercolor Magazine. She is past president of the Texas Watercolor Society, a Western Federation Signature Member. She is a member of the San Diego Watercolor Society, Lake San Marcos Art League, and Asian Impressions Artists of North County. She is represented by the Nanette Richardson Gallery in San Antonio Texas. Kae will be demonstrating her mixed media collage techniques. She says "The endeavor to paint or create is a profound experience. One filled with mystery, observance and previous background. It would do well to remember it is the "journey, not the destination" (quoted from Millard Sheets) that gives us genuine knowledge".

## Artist of the Month

### Mother's Day Display

### A Note from the President ...

Gallery renters, please be patient with changes in the gallery. Our new display cases were only recently obtained, not giving much time to plan their placement and use before the quarterly rotation. Volunteers on Sunday cooperated to make the gallery displays look less crowded. Floor displays were moved from higher areas to clear the view to wall art. Display areas will be reassessed before additional renters are added. The bottom shelf in the alcove is purposely left clear for "gallery items" and Loretta will be working on this. Floor renters, please do not crowd what area you have or expand. Increasing your area can only be done through your Chairpeople! Good job volunteers!

### Please take note of the following corrections to the 2003 directory:

- Diane S. Goodman correct email address is ddkaye1@cox.net
- Elizabeth Nicholson's regular phone # is 602-9710, her correct fax # is 760-931-7870
- Therese Bushen's correct email address is cardiffcardssacredart@cox.net

We are sorry for these mistakes and hope this notice will help!

## The Paint Rag

Off Track Gallery, 510 N. Coast Hwy 101, Encinitas, CA 92024 760-942-3636 Hrs: 9 a.m. to 6 p.m. Daily

### Mark Your Calendar

\* Friday, April 25th  
Monthly Show Take-In  
9:30 a.m. to 2:00 p.m

First come, first serve  
(Please large paintings by 10:30)

\*Thursday, May 1st  
Board Meeting 9:30 a.m.  
Larabee House, Quail Gardens

\*Thursday, May 1st  
General Meeting  
1:30 pm.  
Ecke Hall, Quail Gardens

### Environmental Painters

April 8th and the 15th -- Flower Fields  
in Carlsbad / small entrance fee  
April 22th and 29th - Art Sculpture  
Gardens at Manchester \ east of free-  
way to Manchester then left/ 3700  
Block of Manchester.

May 5th - La Jolla / Children's Pool  
off Coast Blvd.

Call Char Cee for additional direc-  
tions: 760-430-0440

### May 2003

May Judge /  
Demonstrator  
Marija Kae Rodriguez

Kae was recently published  
in the Winter 2003 issue of  
Watercolor Magazine. She is  
past president of the Texas  
Watercolor Society, a Western  
Federation Signature Member.  
She is a member of the San  
Diego Watercolor Society,  
Lake San Marcos Art League,  
and Asian Impressions Artists  
of North County. She is rep-  
resented by the Nanette Rich-  
ardson Gallery in San Antonio  
Texas. Kae will be demonstrat-  
ing her mixed media collage  
techniques. She says "The  
endeavor to paint or create is  
a profound experience. One  
filled with mystery, observance  
and previous background. It  
would do well to remember it  
is the "journey, not the desti-  
nation" (quoted from Millard  
Sheets) that gives us genuine  
knowledge".

### Artist of the Month

#### Mother's Day Display

A Note from the President ... Gallery  
renters, please be patient with changes  
in the gallery. Our new display cases  
were only recently obtained, not giv-  
ing much time to plan their placement  
and use before the quarterly rotation.  
Volunteers on Sunday cooperated to  
make the gallery displays look less  
crowded. Floor displays were moved  
from higher areas to clear the view to  
wall art. Display areas will be reas-  
sessed before additional renters are  
added. The bottom shelf in the alcove  
is purposely left clear for "gallery  
items" and Loretta will be working  
on this. Floor renters, please do not  
crowd what area you have or expand.  
Increasing your area can only be done  
through your Chairpeople! Good job  
volunteers!

Please take note of the following corrections to the 2003  
directory:

- Diane S. Goodman correct email address is ddkaye1@cox.net
- Elizabeth Nicholson's regular phone # is 602-9710, her correct fax #  
is 760-931-7870
- Therese Bushen's correct email address is cardiffcardssacredart@cox.  
net We are sorry for these mistakes and hope this notice will help!